

ASX ANNOUNCEMENT

25 October 2023

Large Lithium and Gold Anomalies Identified from Extensive Soil Sampling Program at Bullabulling

Key Highlights

- Soil sampling results from Belararox's Bullabulling Project have highlighted **strong lithium anomalies up to 324ppm Li**.
- Two of the largest **coherent lithium soil anomalies (>80ppm Li) can each be traced over 500m within a highly prospective > 3km long structural corridor** with anomalous Li values.
- The lithium soil anomalies are associated with elevated caesium (Cs) and tantalum (Ta) **confirming LCT pegmatite type targets** within mafic metamorphic rocks adjacent to the Bali Monzogranite.
- Additionally, several soil gold anomalies (>20ppb Au) have been identified. The most significant anomaly returned assay values **up to 87.6ppb Au and is traceable over 500m**; the anomaly is associated with mafic basalts and amphibolites in a similar structural setting to the adjacent Bullabulling Goldfield.

Future work

- Planning of follow-up infill soil sampling and detailed geological mapping is underway to better define the anomalies before drill testing.

Belararox Ltd (ASX:BRX) (Belararox or the Company) is an advanced mineral explorer focused on high-value clean energy metals, and has identified potential LCT mineralisation at the Company's Bullabulling 100% owned project. Additionally, the project is considered highly prospective for gold.

Managing Director, Arvind Misra, commented:

The soil sampling programme was very effective in better defining the most prospective areas for lithium and gold mineralisation at Bullabulling. With increased prospectivity and confidence, additional detailed geological mapping and ground truthing will commence shortly with the aim of refining the drill ready targets.

Bullabulling Project

Belararox holds the Bullabulling Project which is comprised of 26 wholly owned tenements covering an area of approx. 50 km² to the west of Coolgardie in the Eastern Goldfields of Western Australia. The company is pleased to announce the results of an extensive soil sampling program comprising 1581 soil samples collected during July and August 2023.

The soil sampling program was designed as a follow-up to a first pass reconnaissance mapping and rock chip sampling program, where rock chip assay results from mapped pegmatites returned elevated lithium (Li) and rubidium (Rb) values (refer to BRX ASX announcement from the 26th June 2023). Soil samples were taken on a nominal 125m x 125m grid spacing across highly prospective areas for lithium and gold mineralisation and have revealed several strong lithium and gold anomalies (Figures 1, 2 and 3).

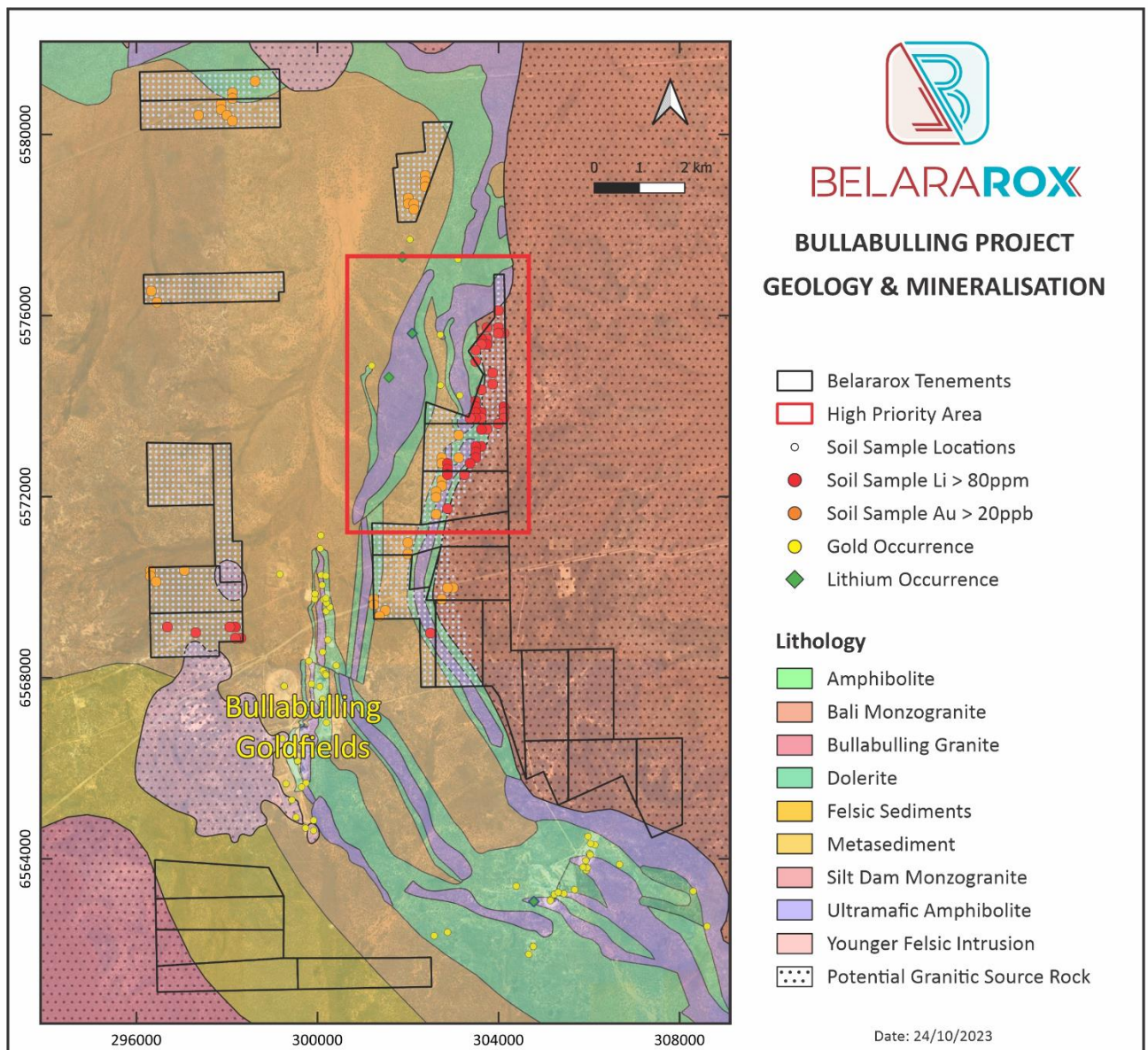


Figure 1. Belararox's Bullabulling project. White dots show the location of the 1581 soil samples collected, red dots represent assay values of >80ppm Li and orange dots represent assay values >20ppb Au. The red outline highlights the most prospective area for lithium and gold mineralisation (extents of Figure 2 and 3).

Lithium

During a recent geological reconnaissance campaign several pegmatites have been identified with anomalous Li and Rb. This suggests the broader Bullabulling Project area has the potential to host a significant LCT pegmatite district (refer to BRX ASX announcement from the 26th June 2023).

The encouraging results from field mapping and rock chip sampling have now been confirmed with a follow-up soil sampling program across the most prospective areas. Strong lithium anomalies up to 324 ppm Li are associated with elevated caesium (Cs) and tantalum (Ta) confirming LCT pegmatite type targets within favourable mafic metamorphic rocks adjacent to the Bali Monzogranite. Furthermore, the two largest coherent lithium soil anomalies can be traced over 500m each and are adjacent to outcropping pegmatites identified during previous geological mapping and rock chip sampling, within a highly prospective structural corridor that extends over 3kms (Figure 2).

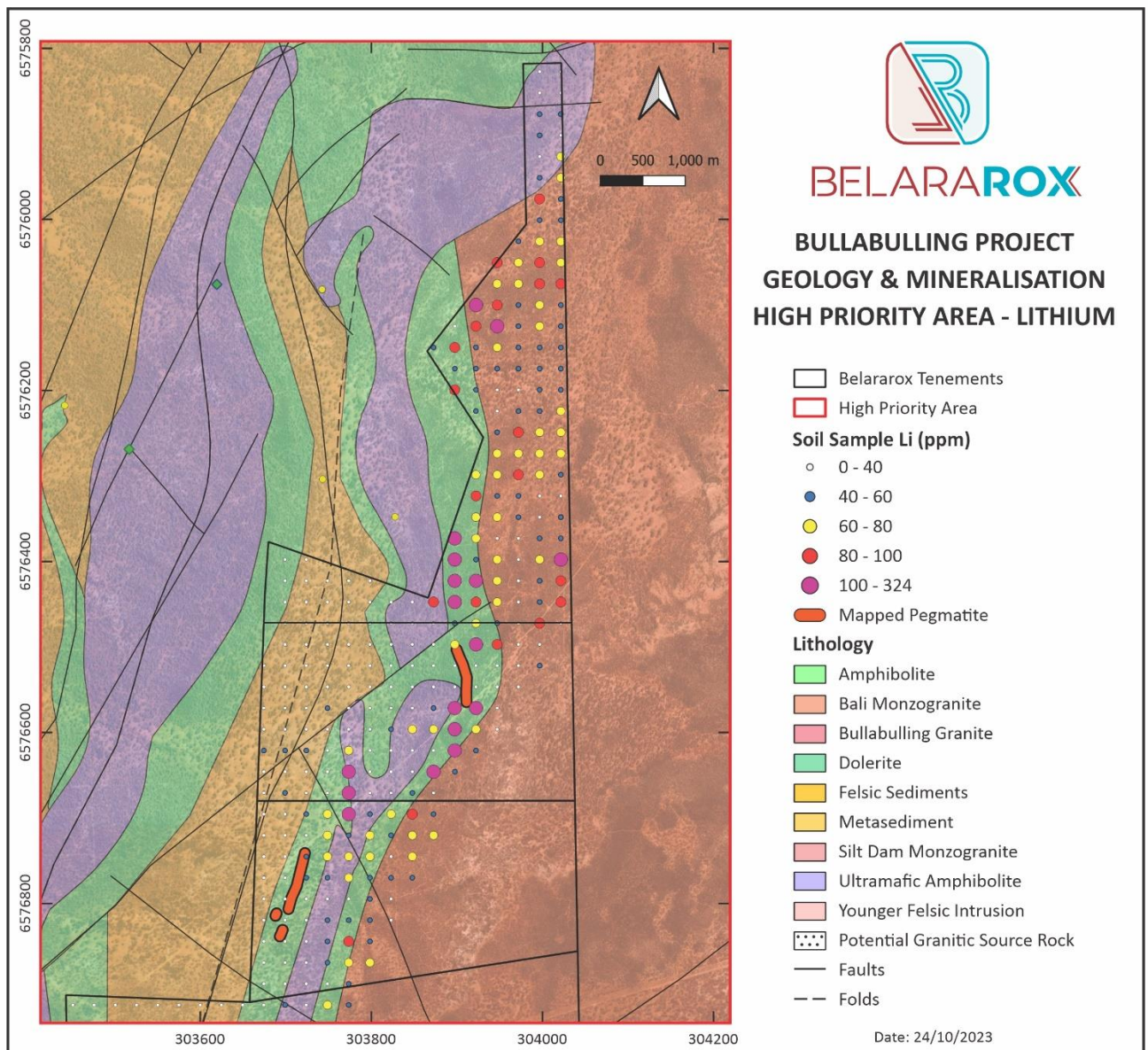


Figure 2. Li soil samples shown on geological map in high priority area (red outline in Figure 1). Note that some of the highest Li anomalies are adjacent to previously mapped outcropping pegmatites and are hosted in favourable mafic lithologies adjacent to the Bali Monzogranite, extending over 3kms.

A lithium anomaly threshold of 80ppm was chosen based on summary statistics of the data (45 out of 1581 samples are above 80ppm Li, i.e. ~2.85% of all samples, see Table 1 and Table 2) and comparable to recent pegmatite-hosted spodumene discoveries in Western Australia (Phelps-Barber, 2022).

Assay	Li (ppm)
Sample count	1581
Minimum	1.4
Maximum	324
Mean	33.62432
Median	29.8
25 percentile	20.6
75 percentile	41.5
95 percentile	66.285

Table 1. Summary statistics for all Li soil samples at Bullabulling.

Sample	Tenement	East	North	Lithium	Caesium	Tantalum
BBSS_1074	P 1506488	302869	6572481	324.0	39.6	0.026
BBSS_1065	P 1506487	302869	6572606	323.0	20.2	0.029
BBSS_1041	P 1506487	303494	6572856	228.0	17.7	0.010
BBSS_0942	P 1506486	303494	6573856	192.0	31.2	0.002
BBSS_0934	P 1506486	303494	6573981	149.0	17.0	0.003
BBSS_1056	P 1506487	302869	6572731	144.0	11.0	0.016
BBSS_0953	P 1506486	303494	6573731	144.0	10.8	0.004
BBSS_1018	P 1506487	303494	6573106	128.0	35.1	0.005
BBSS_1052	P 1506487	303369	6572731	122.0	13.8	0.017
BBSS_1017	P 1506487	303619	6573106	118.0	14.3	0.003
BBSS_0979	P 1506487	303619	6573481	118.0	13.2	0.013
BBSS_0941	P 1506486	303619	6573856	116.0	11.6	0.005
BBSS_1030	P 1506487	303494	6572981	116.0	19.0	0.005
BBSS_0928	P 1506486	303494	6574106	112.0	16.1	0.007
BBSS_0753	P 1506480	298183	6569117	111.0	3.5	0.006
BBSS_0873	P 1506486	303744	6575356	109.0	11.0	0.006
BBSS_0869	P 1506486	303619	6575481	104.0	15.1	0.008
BBSS_0929	P 1506486	304119	6573981	101.0	6.9	0.003
BBSS_0868	P 1506486	303744	6575481	100.0	8.7	0.004
BBSS_0851	P 1506486	303994	6576106	99.3	16.3	0.002
BBSS_0786	P 1506480	298308	6568867	98.0	3.6	0.007
BBSS_0917	P 1506486	303619	6574356	97.8	10.8	0.003
BBSS_0858	P 1506486	303994	6575731	97.6	18.6	0.004
BBSS_0881	P 1506486	303494	6575231	97.5	13.0	0.006
BBSS_0861	P 1506486	304119	6575606	97.2	9.9	0.004
BBSS_0787	P 1506480	298183	6568867	95.3	4.3	0.004
BBSS_0952	P 1506486	303619	6573731	91.2	9.5	0.002
BBSS_0862	P 1506486	303994	6575606	90.8	9.8	0.003
BBSS_0860	P 1506486	303744	6575731	90.6	24.2	0.002
BBSS_0948	P 1506486	304119	6573731	87.7	8.1	0.008
BBSS_1366	P 1506560	302494	6568981	87.4	58.2	0.006
BBSS_0937	P 1506486	304119	6573856	87.0	7.9	0.006
BBSS_0954	P 1506486	303369	6573731	86.5	32.5	0.006
BBSS_0874	P 1506486	303619	6575356	85.0	10.3	0.005
BBSS_1119	P 1506488	302869	6571731	84.6	34.0	0.002
BBSS_1071	P 1506488	303244	6572481	84.3	8.1	0.001
BBSS_0902	P 1506486	303869	6574731	83.1	10.0	0.006
BBSS_0910	P 1506486	303869	6574481	83.1	8.9	0.008
BBSS_0963	P 1506487	303994	6573606	82.8	6.7	0.009
BBSS_0754	P 1506480	298058	6569117	82.3	2.8	0.007
BBSS_0765	P 1506480	296683	6569117	82.3	5.2	0.011
BBSS_0894	P 1506486	303494	6574981	81.4	11.9	0.003
BBSS_0777	P 1506480	297308	6568992	80.3	3.7	0.009
BBSS_0978	P 1506487	303744	6573481	80.3	13.3	0.008
BBSS_0757	P 1506480	297683	6569117	80.0	3.5	0.004

Table 2. Assay results for selected soil samples at Bullabulling (Li > 80ppm). All assay values are shown in parts per million (ppm).

Gold

Previous mapping and field reconnaissance have identified historical workings within mafic basalts and amphibolites, which are the main regional host for gold mineralisation including at the nearby Bullabulling goldfield (Figure 1). Rock chip sampling of vuggy gossanous quartz material adjacent to an old shaft has returned grades of 11.5ppm Au (BBGS025) and 1ppm Au (BBGS024) respectively (refer to BRX ASX announcement from the 26th June 2023).

The recently completed soil sampling program has identified several gold anomalies (>20ppb Au), with assay values up to 87.6 ppb Au. The most significant anomaly can be traced over 500m and is associated with mafic basalts and amphibolites in a similar structural setting to the adjacent Bullabulling goldfield (Figure 1 and Figure 3). The Au soil anomaly is offset to the right (dextral movement) viewing the anomaly across the fault plane, potentially indicating either a structural control or rock unit association for the Au soil anomaly. Future proposed exploration activities can potentially follow up this association.

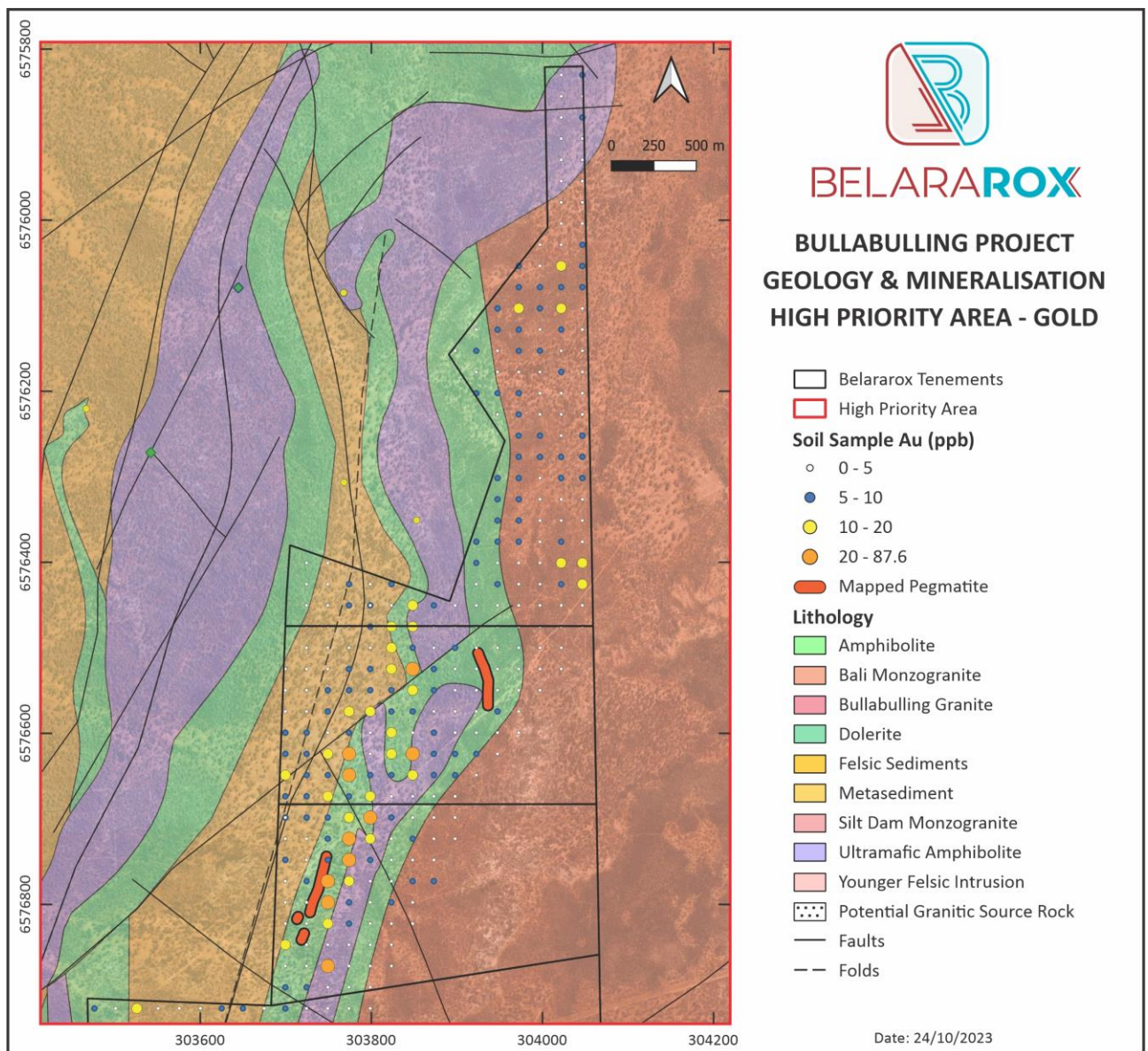


Figure 3. Au soil samples shown on geological map in high priority area (red outline in Figure 1). Note the Au soil anomaly trend in favourable mafic lithologies and the similar structural setting to the Bullabulling Goldfields.

Assay	Au (ppb)
Sample count	1577
Minimum	0.6
Maximum	87.6
Mean	6.29981
Median	4.8
25 percentile	3.3
75 percentile	7.6
95 percentile	15.03

Table 3. Summary statistics for all Au soil samples at Bullabulling.

Sample	Tenement	East	North	Au	Sample	Tenement	East	North	Au
BBSS_1092	P 1506488	302744	6572231	87.6	BBSS_1520	P 1506427	302379	6578840	22.7
BBSS_1101	P 1506488	302619	6572106	67.0	BBSS_0336	P 1506477	296326	6576538	22.5
BBSS_1047	P 1506487	302744	6572856	45.1	BBSS_1518	P 1506427	302379	6579090	22.4
BBSS_1314	P 1506559	301244	6569606	44.7	BBSS_0182	P 1506476	297994	6580421	22.3
BBSS_1299	P 1506559	301244	6569731	41.5	BBSS_0371	P 1506477	296451	6576288	22.2
BBSS_1108	P 1506488	302619	6571981	39.2	BBSS_0592	P 1506479	297058	6570367	22.2
BBSS_1519	P 1506427	302379	6578965	38.8	BBSS_0996	P 1506487	303119	6573356	21.6
BBSS_0631	P 1506479	296433	6570117	31.2	BBSS_1044	P 1506487	303119	6572856	21.6
BBSS_1265	P 1506490	302869	6569981	30.9	BBSS_0037	P 1506475	298619	6581171	21.5
BBSS_1057	P 1506487	302744	6572731	30.7	BBSS_1084	P 1506488	302744	6572356	21.4
BBSS_1289	P 1506490	302744	6569731	30.4	BBSS_1184	P 1506489	301994	6570981	21.3
BBSS_0598	P 1506479	296308	6570367	30.3	BBSS_1207	P 1506489	301994	6570731	21.2
BBSS_1344	P 1506559	301369	6569356	30.2	BBSS_1074	P 1506488	302869	6572481	21.1
BBSS_1127	P 1506488	302619	6571606	29.1	BBSS_0159	P 1506476	297869	6580546	21.0
BBSS_0111	P 1506475	298119	6580796	28.2	BBSS_0615	P 1506479	296308	6570242	20.8
BBSS_0136	P 1506476	297869	6580671	24.4	BBSS_1495	P 1506427	302129	6578340	20.5
BBSS_1327	P 1506559	301494	6569481	24.3	BBSS_0086	P 1506475	298119	6580921	20.4
BBSS_0187	P 1506476	297369	6580421	24.1	BBSS_0205	P 1506476	298119	6580296	20.2
BBSS_1494	P 1506427	302129	6578465	24.1	BBSS_1264	P 1506559	302994	6569981	20.2
BBSS_1481	P 1506427	302004	6578465	23.0	BBSS_1480	P 1506427	302004	6578590	20.2

Table 4. Assay results for selected Au soil samples at Bullabulling (Au > 20ppb) shown in parts per billion (ppb).

Nearby Exploration Success

11.5km to the east of Belararox's eastern tenement boundary, Future Battery Minerals (ASX:FBM) announced it had intercepted 29m @ 1.36% Li₂O from 38m downhole in a 14-hole Phase 1 reverse circulation (RC) drilling program at its Kangaroo Hill Lithium Project (20 April 2023, FBM ASX announcement 'Exploration Update Kangaroo Hills Lithium Project').

These results, from fractionated pegmatites, are located in close proximity to the Belararox tenements and within a similar geological setting. They are considered analogous to the pegmatites identified across the Bullbulling Project, where elevated lithium values have been identified.

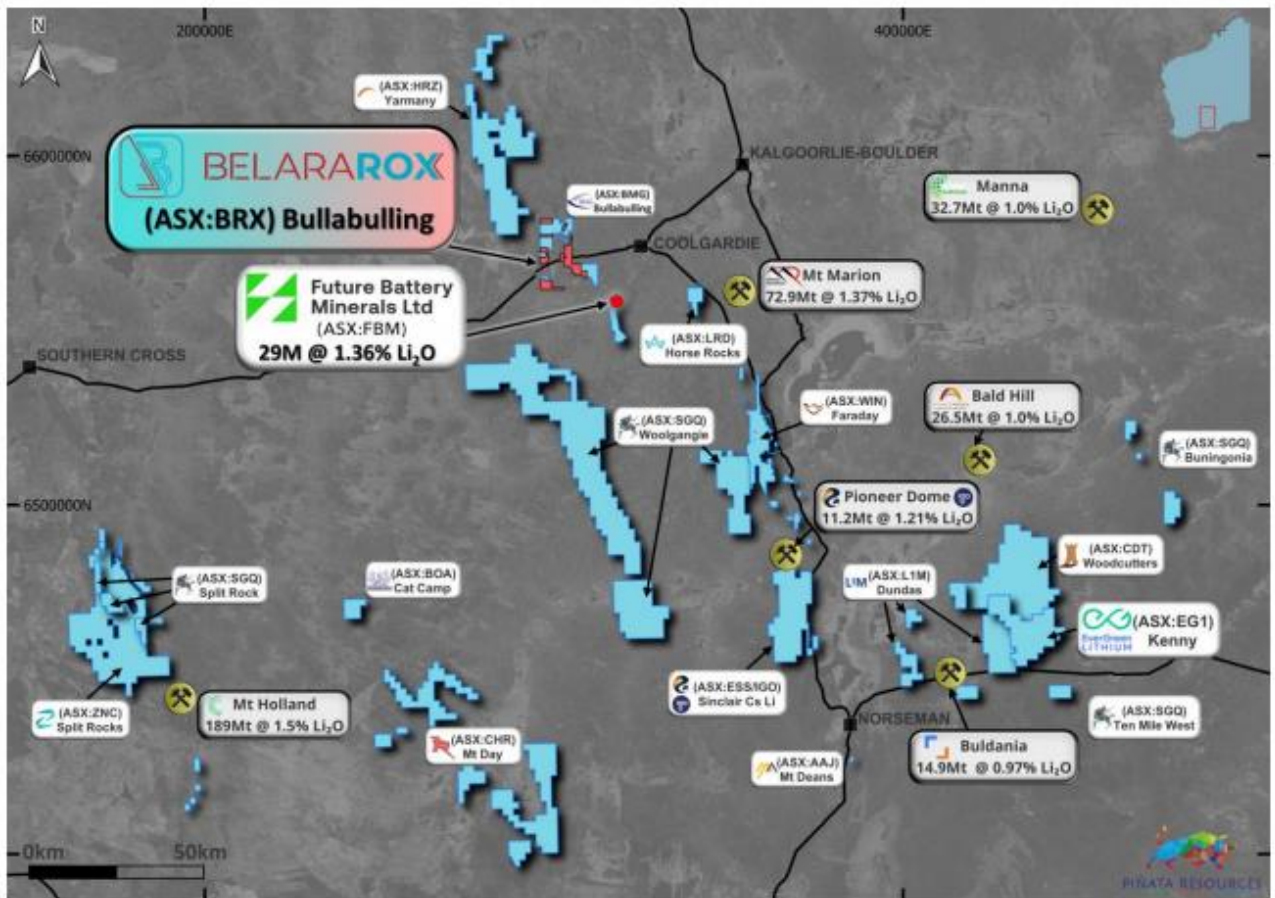


Figure 4. Lithium deposits and projects located within the Coolgardie region.

Proposed Exploration Program

Planning of follow-up infill soil sampling and detailed geological mapping is underway to better define the anomalies before drill testing.

This announcement has been authorised for release by the Board of Belararox.

SHAREHOLDER ENQUIRIES

Arvind Misra
Managing Director
Belararox Limited
arvind.misra@belararox.com.au

MEDIA ENQUIRIES

Julia Maguire
The Capital Network
julia@thecapitalnetwork.com.au

GENERAL ENQUIRIES

Belararox Limited
www.belararox.com.au
info@belararox.com.au

About Belarox Limited (ASX: BRX)

Belarox is a mineral explorer focused on securing and developing resources to meet the surge in demand from the technology, battery and renewable energy markets. Our projects currently include the potential for zinc, copper, gold, silver, nickel and lead resources.

Forward Looking Statements

This report contains forward looking statements concerning the projects owned by Belarox Limited. Statements concerning mining reserves and resources and exploration interpretations may also be deemed to be forward looking statements in that they involve estimates based on specific assumptions. Forward-looking statements are not statements of historical fact and actual events, and results may differ materially from those described in the forward looking statements as a result of a variety of risks, uncertainties and other factors. Forward looking statements are based on management's beliefs, opinions and estimates as of the dates the forward - looking statements are made and no obligation is assumed to update forward looking statements if these beliefs, opinions and estimates should change or to reflect other future developments.

Competent Person's Statement

The information in this announcement to which this statement is attached relates to Exploration Results and is based on information compiled by Mr Chris Blaser. Mr Blaser is the Exploration Manager of Belarox Ltd and is a Competent Person who is a Member of the Australian Institute of Geoscientists (AIG) and Australasian Institute of Mining and Metallurgy (AusIMM). Mr Blaser has sufficient experience that is relevant to the style of mineralisation and type of deposit under consideration, and to the exploration techniques being used to qualify as a Competent Person as defined in the 2012 Edition of the "Australasian Code for Reporting of Exploration Results, Mineral Resources and Ore Reserves". Mr Blaser consents to the inclusion in the report of the matters based on his information in the form and context in which it appears.

References

Zoe Phelps-Barber, Allan Trench & David I. Groves (2022) Recent pegmatite-hosted spodumene discoveries in Western Australia: insights for lithium exploration in Australia and globally, *Applied Earth Science*, 131:2, 100-113, DOI: 10.1080/25726838.2022.2065450

Appendix B

Bullabulling Li, Cs, Ta and Au Soil Sampling Results

Sample	East	North	Li (ppm)	Cs (ppm)	Ta (ppm)	Au (ppb)	Sample	East	North	Li (ppm)	Cs (ppm)	Ta (ppm)	Au (ppb)
BBSS_0001	299119	6581421	36.20	3.19	0.006	7.3	BBSS_0772	297933	6568992	50.70	4.41	0.007	10.7
BBSS_0002	298994	6581421	36.30	3.28	0.008	6.2	BBSS_0773	297808	6568992	44.60	3.22	0.003	6.1
BBSS_0003	298869	6581421	36.40	3.45	0.005	3.1	BBSS_0773D	297808	6568992	56.60	3.65	0.005	6.0
BBSS_0004	298744	6581421	45.80	4.39	0.008	5.0	BBSS_0774	297683	6568992	72.80	4.22	0.008	6.9
BBSS_0005	298619	6581421	35.60	3.62	0.010	5.4	BBSS_0775	297558	6568992	59.70	3.81	0.007	4.9
BBSS_0006	298494	6581421	36.70	3.29	0.007	4.3	BBSS_0776	297433	6568992	43.20	3.10	0.003	6.3
BBSS_0007	298369	6581421	27.60	1.84	0.004	6.4	BBSS_0777	297308	6568992	80.30	3.69	0.009	6.6
BBSS_0008	299119	6581296	31.10	3.14	0.005	5.6	BBSS_0778	297183	6568992	29.60	2.56	0.018	4.7
BBSS_0009	298994	6581296	41.40	3.70	0.010	4.8	BBSS_0779	297058	6568992	24.00	2.63	0.003	4.1
BBSS_0010	298869	6581296	37.40	3.59	0.004	6.3	BBSS_0780	296933	6568992	26.40	3.21	0.004	11.2
BBSS_0011	298744	6581296	44.10	4.89	0.009	4.7	BBSS_0781	296808	6568992	16.20	2.13	0.003	4.4
BBSS_0012	298619	6581296	40.70	6.02	0.009	5.9	BBSS_0782	296683	6568992	30.50	3.50	0.002	5.0
BBSS_0013	298494	6581296	34.90	4.16	0.014	3.5	BBSS_0783	296558	6568992	31.50	3.74	0.004	7.1
BBSS_0014	298369	6581296	43.30	5.63	0.008	3.8	BBSS_0784	296433	6568992	24.40	3.15	0.002	3.5
BBSS_0015	298244	6581296	41.20	2.42	0.007	5.8	BBSS_0785	296308	6568992	36.50	4.02	0.004	7.9
BBSS_0016	298119	6581296	29.00	2.73	0.005	4.1	BBSS_0786	298308	6568867	98.00	3.57	0.007	8.1
BBSS_0017	297994	6581296	35.30	5.86	0.004	6.0	BBSS_0787	298183	6568867	95.30	4.26	0.004	4.8
BBSS_0018	297869	6581296	41.10	3.92	0.009	7.0	BBSS_0788	298058	6568867	48.20	3.99	0.004	8.5
BBSS_0019	297744	6581296	50.60	3.38	0.006	3.8	BBSS_0789	297933	6568867	44.00	4.23	0.004	9.2
BBSS_0020	297619	6581296	45.70	5.33	0.007	8.2	BBSS_0790	297808	6568867	30.70	4.16	0.004	7.7
BBSS_0021	297494	6581296	45.70	3.84	0.006	8.7	BBSS_0791	297683	6568867	39.90	3.78	0.004	15.8
BBSS_0022	297369	6581296	36.30	3.00	0.004	8.9	BBSS_0792	297558	6568867	46.00	4.21	0.006	7.7
BBSS_0023	297244	6581296	55.20	2.99	0.002	4.6	BBSS_0793	297433	6568867	37.30	3.61	0.005	9.9
BBSS_0024	297119	6581296	52.50	3.39	0.011	4.2	BBSS_0794	297308	6568867	32.00	3.02	0.002	8.7
BBSS_0025	296994	6581296	12.70	4.09	0.015	8.9	BBSS_0795	297183	6568867	52.60	3.68	0.004	6.6
BBSS_0026	296869	6581296	49.50	3.44	0.009	6.6	BBSS_0796	297058	6568867	30.90	4.93	0.007	9.1
BBSS_0027	296744	6581296	43.00	3.00	0.006	4.2	BBSS_0797	296933	6568867	21.10	2.56	0.003	5.2
BBSS_0028	296619	6581296	56.00	3.27	0.008	4.5	BBSS_0798	296808	6568867	12.90	2.65	0.009	4.8
BBSS_0029	296494	6581296	58.00	3.38	0.006	4.2	BBSS_0799	296683	6568867	23.80	3.48	0.009	5.6
BBSS_0030	296369	6581296	51.70	3.32	0.006	3.4	BBSS_0800	296558	6568867	37.30	4.41	0.005	4.4
BBSS_0031	296244	6581296	39.50	2.76	0.003	4.0	BBSS_0801	296433	6568867	21.70	4.14	0.002	4.0
BBSS_0032	296119	6581296	45.90	3.35	0.011	4.3	BBSS_0802	297808	6568742	27.10	3.93	0.004	3.4
BBSS_0033	299119	6581171	38.20	3.35	0.008	6.2	BBSS_0803	297683	6568742	32.10	4.08	0.005	4.2
BBSS_0034	298994	6581171	41.50	3.21	0.008	7.4	BBSS_0804	297558	6568742	39.20	4.65	0.005	4.4
BBSS_0035	298869	6581171	39.70	4.22	0.006	7.4	BBSS_0805	297433	6568742	29.40	4.17	0.007	5.9
BBSS_0036	298744	6581171	38.20	5.34	0.011	5.3	BBSS_0806	297308	6568742	28.40	4.05	0.004	4.5
BBSS_0037	298619	6581171	61.00	9.70	0.012	21.5	BBSS_0807	297183	6568742	40.20	3.65	0.004	7.6
BBSS_0038	298494	6581171	33.30	5.80	0.007	10.1	BBSS_0808	297058	6568742	35.60	4.39	0.008	5.7
BBSS_0039	298369	6581171	38.30	7.09	0.006	3.0	BBSS_0809	296933	6568742	25.40	3.41	0.005	6.1
BBSS_0040	298244	6581171	31.60	8.64	0.008	11.8	BBSS_0810	296808	6568742	12.60	3.06	0.003	3.9
BBSS_0040D	298244	6581171	29.00	9.21	0.007	9.7	BBSS_0811	296683	6568742	18.40	2.62	0.004	5.4
BBSS_0041	298119	6581171	18.00	2.46	0.002	6.0	BBSS_0812	296558	6568742	14.10	3.13	0.004	7.9
BBSS_0042	297994	6581171	43.10	3.87	0.003	6.3	BBSS_0813	296433	6568742	42.90	4.50	0.008	7.0
BBSS_0043	297869	6581171	30.80	2.91	0.004	9.1	BBSS_0813D	296433	6568742	42.00	4.70	0.010	4.6
BBSS_0044	297744	6581171	49.20	3.73	0.005	4.5	BBSS_0814	297808	6568617	11.50	3.77	0.002	7.1
BBSS_0045	297619	6581171	43.00	4.17	0.005	4.7	BBSS_0815	297683	6568617	10.80	2.47	0.005	4.8
BBSS_0046	297494	6581171	36.20	3.79	0.008	8.9	BBSS_0816	297558	6568617	20.10	4.08	0.007	5.1
BBSS_0047	297369	6581171	37.10	4.72	0.006	15.9	BBSS_0817	297433	6568617	26.30	3.85	0.005	
BBSS_0048	297244	6581171	47.50	3.61	0.013	12.7	BBSS_0818	297308	6568617	20.80	3.85	0.004	11.1
BBSS_0049	297119	6581171	55.50	4.18	0.004	3.8	BBSS_0819	297183	6568617	4.05	2.45	0.007	2.9
BBSS_0050	296994	6581171	57.50	4.00	0.020	8.3	BBSS_0820	297058	6568617	37.40	2.78	0.005	4.2
BBSS_0051	296869	6581171	45.20	3.29	0.006	12.1	BBSS_0821	296933	6568617	14.90	2.77	0.004	1.8
BBSS_0052	296744	6581171	40.70	3.35	0.008	3.7	BBSS_0822	296808	6568617	15.40	3.07	0.008	2.7
BBSS_0053	296619	6581171	63.70	3.37	0.006	4.0	BBSS_0823	296683	6568617	6.33	2.50	0.002	4.0
BBSS_0054	296494	6581171	54.50	3.72	0.004	4.4	BBSS_0824	296558	6568617	23.20	3.01	0.006	2.0
BBSS_0055	296369	6581171	59.10	4.06	0.005	5.6	BBSS_0825	296433	6568617	18.20	2.38	0.003	4.5
BBSS_0056	296244	6581171	39.70	3.11	0.007	6.2	BBSS_0826	297808	6568492	29.30	9.19	0.003	5.3

Sample	East	North	Li (ppm)	Cs (ppm)	Ta (ppm)	Au (ppb)	Sample	East	North	Li (ppm)	Cs (ppm)	Ta (ppm)	Au (ppb)
BBSS_0057	296119	6581171	41.50	3.17	0.004	4.3	BBSS_0827	297683	6568492	5.94	2.21	0.002	5.1
BBSS_0058	299119	6581046	37.70	3.68	0.006	6.8	BBSS_0828	297558	6568492	21.20	6.66	0.002	5.9
BBSS_0059	298994	6581046	39.30	4.17	0.006	5.8	BBSS_0829	297433	6568492	19.00	2.66	0.001	11.0
BBSS_0060	298869	6581046	40.80	4.02	0.009	5.5	BBSS_0830	297308	6568492	19.90	3.68	0.002	5.9
BBSS_0061	298744	6581046	63.20	20.40	0.007	12.6	BBSS_0831	297183	6568492	12.10	1.27	0.002	6.1
BBSS_0062	298619	6581046	45.50	16.20	0.006	8.8	BBSS_0832	297058	6568492	29.30	4.27	0.013	3.3
BBSS_0063	298494	6581046	33.50	3.92	0.005	5.0	BBSS_0833	296933	6568492	29.40	4.68	0.010	5.6
BBSS_0064	298369	6581046	27.10	5.22	0.003	5.4	BBSS_0834	296808	6568492	30.30	3.14	0.002	4.3
BBSS_0065	298244	6581046	19.30	4.95	0.003	4.6	BBSS_0835	296683	6568492	13.90	2.07	0.004	2.8
BBSS_0066	298119	6581046	13.50	2.80	0.001	9.8	BBSS_0836	296558	6568492	36.70	2.81	0.009	8.1
BBSS_0067	297994	6581046	29.00	3.64	0.004	9.4	BBSS_0837	296433	6568492	16.60	2.13	0.004	4.0
BBSS_0068	297869	6581046	34.10	4.76	0.006	7.5	BBSS_0838	304119	6576856	39.90	7.94	0.005	6.9
BBSS_0069	297744	6581046	19.90	3.27	0.004	8.0	BBSS_0839	303994	6576856	38.50	2.58	0.002	4.8
BBSS_0070	297619	6581046	32.00	4.28	0.006	11.4	BBSS_0840	304119	6576731	21.70	3.94	0.002	1.8
BBSS_0071	297494	6581046	42.60	3.87	0.008	7.2	BBSS_0841	303994	6576731	37.70	4.22	0.001	1.5
BBSS_0072	297369	6581046	35.40	3.00	0.006	8.0	BBSS_0842	304119	6576606	44.00	7.38	0.003	8.9
BBSS_0073	297244	6581046	33.80	2.69	0.003	5.0	BBSS_0843	303994	6576606	41.50	4.63	0.002	2.7
BBSS_0074	297119	6581046	35.30	2.83	0.004	5.0	BBSS_0844	304119	6576481	37.80	7.51		4.5
BBSS_0075	296994	6581046	54.00	3.48	0.006	7.6	BBSS_0845	303994	6576481	46.10	6.26	0.002	4.2
BBSS_0076	296869	6581046	55.50	3.61	0.008	9.8	BBSS_0846	304119	6576356	65.10	8.76	0.001	1.5
BBSS_0077	296744	6581046	48.10	3.21	0.005	5.7	BBSS_0847	303994	6576356	39.00	7.30		3.5
BBSS_0078	296619	6581046	53.40	3.74	0.006	3.7	BBSS_0848	304119	6576231	61.10	7.83	0.002	4.3
BBSS_0079	296494	6581046	45.10	3.11	0.006	7.4	BBSS_0849	303994	6576231	45.50	7.35	0.002	4.2
BBSS_0080	296369	6581046	64.90	4.07	0.006	4.5	BBSS_0850	304119	6576106	45.60	5.82	0.001	2.3
BBSS_0080D	296369	6581046	54.60	3.95	0.012	3.8	BBSS_0851	303994	6576106	99.30	16.30	0.002	4.7
BBSS_0081	296244	6581046	58.90	4.02	0.011	4.6	BBSS_0852	304119	6575981	59.40	8.49		2.6
BBSS_0082	296119	6581046	58.10	4.01	0.009	4.6	BBSS_0853	303994	6575981	40.60	7.98	0.001	4.3
BBSS_0083	298494	6580921	22.30	3.83	0.004	2.7	BBSS_0854	304119	6575856	62.10	13.80	0.001	5.3
BBSS_0084	298369	6580921	31.00	3.70	0.010	2.9	BBSS_0855	303994	6575856	68.80	9.90	0.002	4.3
BBSS_0085	298244	6580921	10.90	2.33		4.2	BBSS_0856	303869	6575856	54.80	13.00		2.0
BBSS_0086	298119	6580921	23.00	2.40	0.006	20.4	BBSS_0857	304119	6575731	74.00	13.10	0.004	8.9
BBSS_0087	297994	6580921	32.50	3.78	0.004	7.8	BBSS_0858	303994	6575731	97.60	18.60	0.004	10.6
BBSS_0088	297869	6580921	43.20	3.99	0.006	9.4	BBSS_0859	303869	6575731	64.50	16.70	0.002	4.5
BBSS_0089	297744	6580921	49.80	4.58	0.006	5.2	BBSS_0860	303744	6575731	90.60	24.20	0.002	5.5
BBSS_0090	297619	6580921	33.00	3.86	0.006	6.1	BBSS_0861	304119	6575606	97.20	9.91	0.004	8.0
BBSS_0091	297494	6580921	42.90	4.19	0.004	8.3	BBSS_0862	303994	6575606	90.80	9.76	0.003	7.9
BBSS_0092	297369	6580921	57.00	4.21	0.007	5.6	BBSS_0863	303869	6575606	64.00	13.90	0.004	7.0
BBSS_0093	297244	6580921	50.90	3.97	0.005	5.2	BBSS_0864	303744	6575606	70.80	10.70	0.005	6.9
BBSS_0094	297119	6580921	49.30	3.81	0.009	5.0	BBSS_0865	304119	6575481	45.90	6.87	0.002	3.0
BBSS_0095	296994	6580921	45.60	3.49	0.015	11.9	BBSS_0866	303994	6575481	65.70	9.35	0.004	10.1
BBSS_0096	296869	6580921	45.40	3.66	0.005	8.6	BBSS_0867	303869	6575481	57.40	6.86	0.005	5.7
BBSS_0097	296744	6580921	51.00	3.96	0.004	7.0	BBSS_0868	303744	6575481	100.00	8.70	0.004	10.7
BBSS_0098	296619	6580921	40.00	3.48	0.003	5.4	BBSS_0869	303619	6575481	104.00	15.10	0.008	7.8
BBSS_0099	296494	6580921	44.80	3.71	0.006	6.8	BBSS_0870	304119	6575356	56.60	5.12	0.002	4.3
BBSS_0100	296369	6580921	43.70	3.53	0.004	4.7	BBSS_0871	303994	6575356	60.10	7.81	0.003	8.6
BBSS_0101	296244	6580921	44.00	3.90	0.006	6.1	BBSS_0872	303869	6575356	48.30	5.12	0.004	4.9
BBSS_0102	296119	6580921	49.90	3.90	0.004	4.8	BBSS_0873	303744	6575356	109.00	11.00	0.006	8.6
BBSS_0103	299119	6580796	44.90	5.12	0.004	4.5	BBSS_0874	303619	6575356	85.00	10.30	0.005	5.6
BBSS_0104	298994	6580796	34.80	4.01	0.008	7.8	BBSS_0875	303494	6575356	37.90	5.36	0.003	2.5
BBSS_0105	298869	6580796	40.20	4.87	0.008	4.5	BBSS_0876	304119	6575231	52.90	5.87	0.002	2.2
BBSS_0106	298744	6580796	21.60	3.42	0.002	4.5	BBSS_0877	303994	6575231	41.30	5.12	0.002	1.9
BBSS_0107	298619	6580796	35.10	3.50	0.003	4.3	BBSS_0878	303869	6575231	41.50	5.97	0.003	4.5
BBSS_0108	298494	6580796	26.50	4.72	0.004	6.3	BBSS_0878D	303869	6575231	52.10	7.00	0.002	5.3
BBSS_0109	298369	6580796	24.00	3.99	0.002	4.6	BBSS_0879	303744	6575231	71.20	9.51	0.008	6.1
BBSS_0110	298244	6580796	27.40	3.72	0.006	9.1	BBSS_0880	303619	6575231	45.00	5.58	0.002	1.7
BBSS_0111	298119	6580796	21.10	2.94	0.004	28.2	BBSS_0881	303494	6575231	97.50	13.00	0.006	6.2
BBSS_0112	297994	6580796	25.50	2.97	0.004	16.3	BBSS_0882	303369	6575231	49.90	5.82	0.001	3.9
BBSS_0113	297869	6580796	34.80	3.78	0.007	9.1	BBSS_0883	304119	6575106	56.80	3.55	0.002	3.5
BBSS_0114	297494	6580796	50.50	4.56	0.024	6.8	BBSS_0884	303994	6575106	49.00	4.74	0.002	7.7
BBSS_0115	297369	6580796	63.80	3.51	0.017	6.7	BBSS_0885	303869	6575106	46.60	5.62	0.002	3.2
BBSS_0116	297244	6580796	58.50	4.56	0.005	4.8	BBSS_0886	303744	6575106	55.70	6.95	0.003	4.0

Sample	East	North	Li (ppm)	Cs (ppm)	Ta (ppm)	Au (ppb)	Sample	East	North	Li (ppm)	Cs (ppm)	Ta (ppm)	Au (ppb)
BBSS_0117	297119	6580796	40.30	3.56	0.014	8.3	BBSS_0887	303619	6575106	55.20	7.44	0.002	4.1
BBSS_0118	296994	6580796	50.60	4.05	0.022	7.6	BBSS_0888	303494	6575106	50.70	8.37	0.005	4.9
BBSS_0119	296869	6580796	63.50	4.68	0.003	6.4	BBSS_0889	304119	6574981	44.80	4.55	0.003	3.9
BBSS_0120	296744	6580796	45.80	3.86	0.018	9.2	BBSS_0890	303994	6574981	43.50	4.38	0.004	2.8
BBSS_0120D	296744	6580796	51.00	3.86	0.012	7.5	BBSS_0891	303869	6574981	38.30	4.43	0.002	3.3
BBSS_0121	296619	6580796	48.60	4.09	0.009	4.7	BBSS_0892	303744	6574981	36.30	7.97	0.009	7.9
BBSS_0122	296494	6580796	46.20	4.45	0.009	2.4	BBSS_0893	303619	6574981	46.80	7.17	0.003	5.1
BBSS_0123	296369	6580796	40.20	3.78	0.005	6.6	BBSS_0894	303494	6574981	81.40	11.90	0.003	6.1
BBSS_0124	296244	6580796	39.30	3.82	0.006	5.3	BBSS_0895	304119	6574856	72.80	7.96	0.001	4.7
BBSS_0125	296119	6580796	40.20	4.45	0.017	3.3	BBSS_0896	303994	6574856	52.40	8.06		2.5
BBSS_0126	299119	6580671	36.20	4.46	0.007	8.3	BBSS_0897	303869	6574856	54.00	8.94	0.004	5.0
BBSS_0127	298994	6580671	34.70	4.80	0.008	4.8	BBSS_0898	303744	6574856	29.90	3.85	0.002	5.5
BBSS_0128	298869	6580671	31.00	4.23	0.005	5.8	BBSS_0899	303619	6574856	54.40	6.24	0.003	2.8
BBSS_0129	298744	6580671	26.20	3.20	0.006	8.1	BBSS_0900	304119	6574731	67.20	6.15	0.003	7.4
BBSS_0130	298619	6580671	25.00	3.97	0.002	3.9	BBSS_0901	303994	6574731	64.70	8.60	0.009	4.6
BBSS_0131	298494	6580671	28.40	3.69	0.005	4.0	BBSS_0902	303869	6574731	83.10	10.00	0.006	7.5
BBSS_0132	298369	6580671	18.50	3.65	0.003	4.2	BBSS_0903	303744	6574731	57.60	7.42	0.005	5.7
BBSS_0133	298244	6580671	21.00	1.87	0.003	7.0	BBSS_0904	304119	6574606	66.00	5.96	0.003	6.0
BBSS_0134	298119	6580671	25.60	3.12	0.004	10.5	BBSS_0905	303994	6574606	64.30	6.21	0.002	6.1
BBSS_0135	297994	6580671	38.00	3.71	0.008	13.2	BBSS_0906	303869	6574606	76.90	8.87	0.003	5.1
BBSS_0136	297869	6580671	21.40	3.07	0.006	24.4	BBSS_0907	303744	6574606	64.50	11.00	0.008	5.7
BBSS_0137	297744	6580671	31.70	4.04	0.008	12.4	BBSS_0908	304119	6574481	54.50	5.75	0.004	5.7
BBSS_0138	297619	6580671	14.40	2.31	0.002	7.0	BBSS_0909	303994	6574481	70.00	6.33	0.006	7.5
BBSS_0139	297494	6580671	31.70	2.93	0.006	11.5	BBSS_0910	303869	6574481	83.10	8.87	0.008	3.7
BBSS_0140	297119	6580671	40.60	3.56	0.008	11.8	BBSS_0911	303744	6574481	66.30	9.81	0.005	7.0
BBSS_0141	296994	6580671	30.20	2.68	0.006	12.8	BBSS_0912	303619	6574481	66.00	9.44	0.005	7.6
BBSS_0142	296869	6580671	47.60	3.95	0.008	16.0	BBSS_0913	304119	6574356	32.90	3.48	0.001	4.9
BBSS_0143	296744	6580671	52.40	4.18	0.005	8.7	BBSS_0914	303994	6574356	31.50	3.48	0.001	4.7
BBSS_0144	296619	6580671	37.80	3.35	0.004	4.2	BBSS_0915	303869	6574356	52.10	5.32	0.003	3.9
BBSS_0145	296494	6580671	35.40	3.41	0.005	9.7	BBSS_0916	303744	6574356	53.40	8.88	0.005	7.6
BBSS_0146	296369	6580671	41.10	3.62	0.005	4.9	BBSS_0917	303619	6574356	97.80	10.80	0.003	5.8
BBSS_0147	296244	6580671	51.60	4.06	0.008	5.4	BBSS_0918	304119	6574231	49.70	4.32	0.002	4.0
BBSS_0148	296119	6580671	26.90	2.54	0.003	3.3	BBSS_0918D	304119	6574231	44.40	4.24	0.002	4.7
BBSS_0149	299119	6580546	32.90	3.62	0.006	2.5	BBSS_0919	303994	6574231	26.40	4.38	0.002	3.8
BBSS_0150	298994	6580546	27.30	3.63	0.004	4.0	BBSS_0920	303869	6574231	40.50	4.66	0.001	3.7
BBSS_0151	298869	6580546	17.60	3.23	0.004	6.6	BBSS_0921	303744	6574231	62.30	8.40	0.001	6.0
BBSS_0152	298744	6580546	24.40	3.83	0.007	2.9	BBSS_0922	303619	6574231	79.60	15.30	0.002	6.2
BBSS_0153	298494	6580546	27.00	4.61	0.005	4.9	BBSS_0923	304119	6574106	56.30	5.67	0.003	4.4
BBSS_0154	298494	6580546	13.30	4.36	0.002	5.3	BBSS_0924	303994	6574106	43.80	6.59	0.005	5.1
BBSS_0155	298369	6580546	15.40	3.48	0.003	5.1	BBSS_0925	303869	6574106	40.00	4.63	0.002	4.2
BBSS_0156	298244	6580546	20.90	5.85	0.002	4.7	BBSS_0926	303744	6574106	36.80	4.58	0.001	5.5
BBSS_0157	298119	6580546	23.60	2.57	0.003	2.1	BBSS_0927	303619	6574106	62.80	7.56	0.002	7.7
BBSS_0158	297994	6580546	21.30	2.86	0.004	4.2	BBSS_0928	303494	6574106	112.00	16.10	0.007	6.0
BBSS_0159	297869	6580546	31.70	3.81	0.014	21.0	BBSS_0929	304119	6573981	101.00	6.91	0.003	10.4
BBSS_0160	297744	6580546	27.20	3.25	0.004	12.5	BBSS_0930	303994	6573981	67.20	7.81	0.004	12.2
BBSS_0160D	297744	6580546	23.50	2.95	0.005	9.5	BBSS_0931	303869	6573981	32.40	4.82	0.003	2.5
BBSS_0161	297619	6580546	31.70	3.23	0.006	5.6	BBSS_0932	303744	6573981	71.70	7.13	0.001	3.3
BBSS_0162	297494	6580546	39.80	3.62	0.005	6.0	BBSS_0933	303619	6573981	56.00	8.44	0.004	4.3
BBSS_0163	297369	6580546	37.90	3.97	0.005	8.8	BBSS_0934	303494	6573981	149.00	17.00	0.003	5.5
BBSS_0164	297244	6580546	46.80	4.03	0.008	16.2	BBSS_0935	302619	6573981	11.20	8.20	0.001	4.2
BBSS_0165	297119	6580546	34.60	3.28	0.005	11.0	BBSS_0936	302494	6573981	17.10	2.04		4.0
BBSS_0166	296869	6580546	45.90	3.80	0.008	9.9	BBSS_0937	304119	6573856	87.00	7.95	0.006	12.4
BBSS_0167	296744	6580546	61.60	4.45	0.008	6.5	BBSS_0938	303994	6573856	54.30	6.71	0.003	8.3
BBSS_0168	296619	6580546	49.10	4.16	0.008	7.4	BBSS_0939	303869	6573856	26.30	5.18	0.001	1.9
BBSS_0169	296494	6580546	41.40	4.15	0.016	4.1	BBSS_0940	303744	6573856	77.20	7.21	0.002	4.8
BBSS_0170	296369	6580546	41.60	3.96	0.006	5.0	BBSS_0941	303619	6573856	116.00	11.60	0.005	6.5
BBSS_0171	296244	6580546	42.40	3.67	0.006	4.3	BBSS_0942	303494	6573856	192.00	31.20	0.002	4.9
BBSS_0172	296119	6580546	31.70	2.79	0.006	4.2	BBSS_0943	302994	6573856	29.30	1.75	0.001	7.2
BBSS_0173	299119	6580421	23.50	3.58	0.010	6.3	BBSS_0944	302869	6573856	13.20	1.46	0.002	3.0
BBSS_0174	298994	6580421	29.40	4.05	0.010	5.4	BBSS_0945	302744	6573856	26.40	6.48	0.005	7.7
BBSS_0175	298869	6580421	26.80	4.41	0.006	5.9	BBSS_0946	302619	6573856	35.70	13.40	0.004	2.2

Sample	East	North	Li (ppm)	Cs (ppm)	Ta (ppm)	Au (ppb)	Sample	East	North	Li (ppm)	Cs (ppm)	Ta (ppm)	Au (ppb)
BBSS_0176	298744	6580421	29.90	3.50	0.008	6.1	BBSS_0947	302494	6573856	17.80	1.92	0.004	3.2
BBSS_0177	298619	6580421	29.50	3.54	0.004	2.7	BBSS_0948	304119	6573731	87.70	8.14	0.008	4.5
BBSS_0178	298494	6580421	28.70	4.22	0.008	2.2	BBSS_0949	303994	6573731	52.30	6.15	0.004	2.7
BBSS_0179	298369	6580421	28.60	4.32	0.002	4.0	BBSS_0950	303869	6573731	32.30	4.51	0.002	1.7
BBSS_0180	298244	6580421	23.40	2.94	0.004	4.0	BBSS_0951	303744	6573731	76.50	10.70	0.006	3.7
BBSS_0180D	298244	6580421					BBSS_0952	303619	6573731	91.20	9.48	0.002	2.7
BBSS_0181	298119	6580421	35.70	4.06	0.009	3.7	BBSS_0953	303494	6573731	144.00	10.80	0.004	1.5
BBSS_0182	297994	6580421	36.40	5.03	0.007	22.3	BBSS_0954	303369	6573731	86.50	32.50	0.006	1.6
BBSS_0183	297869	6580421	33.10	4.20	0.014	9.1	BBSS_0955	303244	6573731	28.10	4.48	0.003	7.6
BBSS_0184	297744	6580421	32.80	4.77	0.006	6.9	BBSS_0956	303119	6573731	17.70	2.50	0.002	13.1
BBSS_0185	297619	6580421	42.30	6.19	0.005	5.3	BBSS_0957	302994	6573731	15.80	2.46	0.001	4.8
BBSS_0186	297494	6580421	34.40	5.52	0.005	9.7	BBSS_0958	302869	6573731	24.80	2.81	0.003	5.6
BBSS_0187	297369	6580421	46.70	6.04	0.006	24.1	BBSS_0958D	302869	6573731	24.60	3.05	0.002	5.0
BBSS_0188	297244	6580421	64.10	6.22	0.014	17.4	BBSS_0959	302744	6573731	21.00	3.31	0.004	9.3
BBSS_0189	297119	6580421	42.00	5.11	0.011	11.3	BBSS_0960	302619	6573731	21.80	3.26	0.002	1.4
BBSS_0190	296994	6580421	51.40	5.02	0.010	13.9	BBSS_0961	302494	6573731	12.60	2.57	0.007	2.8
BBSS_0191	296869	6580421	54.20	5.48	0.015	13.2	BBSS_0962	304119	6573606	33.00	6.93	0.003	2.8
BBSS_0192	296619	6580421	56.70	5.35	0.012	9.5	BBSS_0963	303994	6573606	82.80	6.73	0.009	2.4
BBSS_0193	296494	6580421	36.40	3.16	0.003	2.4	BBSS_0964	303869	6573606	19.80	3.11	0.002	3.9
BBSS_0194	296369	6580421	38.40	3.58	0.006	5.8	BBSS_0965	303744	6573606	53.30	8.99	0.008	2.9
BBSS_0195	296244	6580421	41.40	3.33	0.004	4.2	BBSS_0966	303619	6573606	69.90	8.49	0.004	4.1
BBSS_0196	296119	6580421	38.80	3.24	0.003	2.9	BBSS_0967	303494	6573606	45.50	9.86	0.004	2.2
BBSS_0197	299119	6580296	20.50	3.21	0.012	5.4	BBSS_0968	303369	6573606	14.00	5.31	0.002	3.0
BBSS_0198	298994	6580296	26.40	3.63	0.009	6.1	BBSS_0969	303244	6573606	19.90	3.73	0.003	1.6
BBSS_0199	298869	6580296	22.40	3.67	0.007	1.3	BBSS_0970	303119	6573606	20.60	4.98	0.002	15.0
BBSS_0200	298744	6580296	32.80	3.85	0.006	2.8	BBSS_0971	302994	6573606	10.30	3.19	0.003	10.5
BBSS_0200D	298744	6580296	31.80	3.96	0.006	1.7	BBSS_0972	302869	6573606	24.90	2.44	0.002	8.3
BBSS_0201	298619	6580296	27.80	3.03	0.006	3.1	BBSS_0973	302744	6573606	20.70	3.26	0.002	3.1
BBSS_0202	298494	6580296	8.63	2.66	0.003	1.5	BBSS_0974	302619	6573606	12.90	1.59	0.002	2.7
BBSS_0203	298369	6580296	22.10	4.83	0.004	3.1	BBSS_0975	302494	6573606	24.30	2.03	0.003	3.6
BBSS_0204	298244	6580296	16.60	2.12	0.001	1.6	BBSS_0976	303994	6573481	33.50	3.21	0.003	2.6
BBSS_0205	298119	6580296	31.10	2.49	0.006	20.2	BBSS_0977	303869	6573481	37.40	3.37	0.002	2.1
BBSS_0206	297994	6580296	23.60	3.24	0.014	5.1	BBSS_0978	303744	6573481	80.30	13.30	0.008	3.0
BBSS_0207	297869	6580296	19.10	4.64	0.005	6.1	BBSS_0979	303619	6573481	118.00	13.20	0.013	4.2
BBSS_0208	297744	6580296	26.10	5.92	0.008	3.3	BBSS_0980	303494	6573481	70.00	8.39	0.004	3.6
BBSS_0209	297619	6580296	20.80	5.95	0.010	9.0	BBSS_0981	303369	6573481	23.30	3.60	0.002	5.5
BBSS_0210	297494	6580296	29.80	4.22	0.006	4.6	BBSS_0982	303244	6573481	29.10	5.37	0.001	4.0
BBSS_0211	297369	6580296	47.90	5.35	0.011	4.4	BBSS_0983	303119	6573481	24.70	7.00	0.003	9.9
BBSS_0212	297244	6580296	36.40	4.58	0.011	12.4	BBSS_0984	302994	6573481	27.60	6.24	0.021	11.3
BBSS_0213	297119	6580296	37.60	4.72	0.016	7.1	BBSS_0985	302869	6573481	24.20	4.75	0.004	4.6
BBSS_0214	296994	6580296	46.30	4.40	0.011	6.6	BBSS_0986	302744	6573481	32.20	3.11	0.004	2.1
BBSS_0215	296869	6580296	61.90	4.97	0.010	9.0	BBSS_0987	302619	6573481	19.50	1.83	0.003	3.4
BBSS_0216	296744	6580296	56.60	4.63	0.010	4.8	BBSS_0988	302494	6573481	22.70	2.33	0.002	2.7
BBSS_0217	296619	6580296	57.10	4.52	0.016	7.6	BBSS_0989	303994	6573356	46.10	3.41	0.003	1.6
BBSS_0218	296244	6580296	37.60	3.64	0.005	3.1	BBSS_0990	303869	6573356	32.00	3.32	0.003	4.4
BBSS_0219	296119	6580296	21.90	3.04	0.003	3.3	BBSS_0991	303744	6573356	18.90	3.35	0.002	2.3
BBSS_0220	299119	6580171	30.10	3.79	0.008	4.3	BBSS_0992	303619	6573356	16.90	3.28		1.5
BBSS_0221	298994	6580171	29.00	3.27	0.010	5.2	BBSS_0993	303494	6573356	38.10	7.38	0.002	3.0
BBSS_0222	298869	6580171	24.80	3.16	0.010	4.5	BBSS_0994	303369	6573356	25.70	3.67	0.003	3.7
BBSS_0223	298744	6580171	22.00	4.04	0.006	3.6	BBSS_0995	303244	6573356	17.70	4.06	0.004	5.8
BBSS_0224	298619	6580171	21.80	2.26	0.008	3.2	BBSS_0996	303119	6573356	18.80	5.87	0.003	21.6
BBSS_0225	298494	6580171	19.70	2.22	0.007	4.2	BBSS_0997	302994	6573356	26.30	8.69	0.004	12.8
BBSS_0226	298369	6580171	24.80	2.56	0.002	1.2	BBSS_0998	302869	6573356	18.20	4.50	0.005	6.3
BBSS_0227	298244	6580171	13.00	1.73	0.001	2.1	BBSS_0998D	302869	6573356	26.00	4.71	0.006	7.0
BBSS_0228	298119	6580171	21.40	1.63	0.003	2.4	BBSS_0999	302744	6573356	28.60	4.82	0.004	5.1
BBSS_0229	297994	6580171	32.10	3.21	0.006	4.0	BBSS_1000	302619	6573356	20.80	3.72	0.002	3.2
BBSS_0230	297869	6580171	17.10	2.31	0.004	7.8	BBSS_1001	302494	6573356	22.70	4.74	0.005	4.0
BBSS_0231	297744	6580171	20.20	4.00	0.014	5.4	BBSS_1002	302369	6573356	18.20	2.79	0.003	4.0
BBSS_0232	297619	6580171	31.30	4.67	0.007	3.1	BBSS_1003	303869	6573231	31.40	3.17	0.002	4.7
BBSS_0233	297494	6580171	26.80	4.45	0.011	4.5	BBSS_1004	303744	6573231	35.10	3.18	0.003	4.4
BBSS_0234	297369	6580171	25.70	3.34	0.005	2.8	BBSS_1005	303619	6573231	39.00	3.44	0.003	2.6

Sample	East	North	Li (ppm)	Cs (ppm)	Ta (ppm)	Au (ppb)	Sample	East	North	Li (ppm)	Cs (ppm)	Ta (ppm)	Au (ppb)
BBSS_0235	297244	6580171	37.60	5.54	0.006	3.3	BBSS_1006	303494	6573231	24.40	6.48	0.002	4.3
BBSS_0236	297119	6580171	38.00	4.39	0.006	6.0	BBSS_1007	303369	6573231	19.80	6.81	0.005	2.8
BBSS_0237	296994	6580171	50.30	5.62	0.010	8.4	BBSS_1008	303244	6573231	20.10	5.90	0.006	7.4
BBSS_0238	296869	6580171	40.80	4.09	0.003	3.6	BBSS_1009	303119	6573231	20.70	3.63	0.005	12.5
BBSS_0239	296744	6580171	60.80	3.49	0.007	8.8	BBSS_1010	302994	6573231	20.50	4.82	0.006	5.2
BBSS_0240	296619	6580171	60.90	3.85	0.008	11.5	BBSS_1011	302869	6573231	28.30	4.09	0.007	8.7
BBSS_0240D	296619	6580171	49.60	3.42	0.007	11.6	BBSS_1012	302744	6573231	32.00	3.14	0.004	6.2
BBSS_0241	296494	6580171	40.30	3.28	0.002	6.2	BBSS_1013	302619	6573231	18.40	4.43	0.007	5.5
BBSS_0242	296369	6580171	39.30	3.68	0.004	4.3	BBSS_1014	302494	6573231	16.90	1.98	0.004	2.9
BBSS_0243	296244	6580171	37.40	3.11	0.003	4.6	BBSS_1015	302369	6573231	18.00	2.78	0.005	4.7
BBSS_0244	299201	6576913	30.00	3.31	0.002	6.1	BBSS_1016	303744	6573106	19.60	2.71	0.002	3.6
BBSS_0245	299076	6576913	31.80	4.76	0.004	8.2	BBSS_1017	303619	6573106	118.00	14.30	0.003	5.7
BBSS_0246	298951	6576913	28.90	3.81	0.006	6.0	BBSS_1018	303494	6573106	128.00	35.10	0.005	2.4
BBSS_0247	298826	6576913	33.70	4.79	0.002	2.5	BBSS_1019	303369	6573106	42.00	11.40	0.002	3.9
BBSS_0248	298701	6576913	30.50	3.89	0.002	3.4	BBSS_1020	303244	6573106	30.50	9.61	0.006	1.4
BBSS_0249	298576	6576913	20.50	5.67	0.002	3.6	BBSS_1021	303119	6573106	21.40	7.74	0.004	9.2
BBSS_0250	298451	6576913	20.10	5.42	0.002	3.3	BBSS_1022	302994	6573106	14.40	7.21	0.002	5.9
BBSS_0251	298326	6576913	27.60	5.49	0.003	6.1	BBSS_1023	302869	6573106	28.40	4.29	0.007	13.1
BBSS_0252	298201	6576913	27.00	3.16	0.003	6.1	BBSS_1024	302744	6573106	41.70	5.82	0.006	12.9
BBSS_0253	298076	6576913	53.60	5.46	0.004	4.4	BBSS_1025	302619	6573106	34.70	4.72	0.006	6.9
BBSS_0254	297951	6576913	45.80	6.71	0.005	3.1	BBSS_1026	302494	6573106	21.60	3.00	0.003	4.0
BBSS_0255	297826	6576913	31.90	8.35	0.003	2.3	BBSS_1027	302369	6573106	17.70	3.04	0.003	3.2
BBSS_0256	297701	6576913	22.70	4.73	0.004	7.3	BBSS_1028	303744	6572981	22.50	2.46	0.002	4.2
BBSS_0257	297576	6576913	36.00	2.87	0.002	2.2	BBSS_1029	303619	6572981	77.20	15.10	0.003	3.0
BBSS_0258	297451	6576913	35.20	3.27	0.011	6.1	BBSS_1030	303494	6572981	116.00	19.00	0.005	3.5
BBSS_0259	297326	6576913	48.20	3.78	0.003	7.2	BBSS_1031	303369	6572981	74.40	28.90	0.005	3.1
BBSS_0260	297201	6576913	44.80	4.73	0.004	16.6	BBSS_1032	303244	6572981	75.20	9.88	0.004	6.1
BBSS_0261	297076	6576913	60.90	4.21	0.005	7.4	BBSS_1033	303119	6572981	51.20	11.90	0.003	4.6
BBSS_0262	296951	6576913	32.60	3.06	0.005	5.6	BBSS_1034	302994	6572981	32.20	8.52	0.004	10.3
BBSS_0263	299201	6576788	46.40	4.20	0.006	5.4	BBSS_1035	302869	6572981	38.90	5.69	0.008	4.8
BBSS_0264	299076	6576788	37.00	4.42	0.005	4.7	BBSS_1036	302744	6572981	27.60	4.44	0.003	5.7
BBSS_0265	298951	6576788	22.10	5.33	0.009	4.2	BBSS_1037	302619	6572981	36.60	5.83	0.003	2.9
BBSS_0266	298826	6576788	22.80	3.64	0.006	3.0	BBSS_1038	302494	6572981	39.90	6.70	0.010	9.7
BBSS_0267	298701	6576788	19.30	2.63	0.006	5.8	BBSS_1038D	302494	6572981	26.30	5.86	0.008	6.2
BBSS_0268	298576	6576788	17.70	4.45	0.004	2.7	BBSS_1039	302369	6572981	31.40	3.95	0.003	7.4
BBSS_0269	298451	6576788	19.00	2.43	0.004	5.6	BBSS_1040	303619	6572856	51.30	9.68	0.005	3.5
BBSS_0270	298326	6576788	28.40	5.02	0.006	6.9	BBSS_1041	303494	6572856	228.00	17.70	0.010	9.9
BBSS_0271	298201	6576788	26.00	3.33	0.004	4.5	BBSS_1042	303369	6572856	39.60	11.30	0.006	8.0
BBSS_0272	298076	6576788	29.60	4.34	0.004	3.0	BBSS_1043	303244	6572856	22.10	4.04	0.003	5.4
BBSS_0273	297951	6576788	39.90	7.80	0.007	4.0	BBSS_1044	303119	6572856	39.70	11.30	0.004	21.6
BBSS_0274	297826	6576788	37.00	6.37	0.006	2.9	BBSS_1045	302994	6572856	18.50	3.35	0.003	14.0
BBSS_0275	297701	6576788	37.70	5.54	0.004	4.4	BBSS_1046	302869	6572856	74.30	11.30	0.010	4.4
BBSS_0276	297576	6576788	32.60	2.81	0.004	4.1	BBSS_1047	302744	6572856	34.50	5.42	0.004	45.1
BBSS_0277	297451	6576788	54.40	3.51	0.004	4.0	BBSS_1048	302619	6572856	45.20	4.88	0.007	12.9
BBSS_0278	297326	6576788	33.60	4.14	0.003	5.9	BBSS_1049	302494	6572856	47.30	4.20	0.008	6.0
BBSS_0279	297201	6576788	44.20	5.17	0.016	9.7	BBSS_1050	302369	6572856	45.50	6.16	0.014	5.2
BBSS_0280	297076	6576788	47.40	3.59	0.005	5.2	BBSS_1051	303494	6572731	45.20	6.95	0.003	2.0
BBSS_0281	296951	6576788	33.70	2.85	0.007	4.8	BBSS_1052	303369	6572731	122.00	13.80	0.017	6.3
BBSS_0282	296826	6576788	31.80	4.47	0.014	3.7	BBSS_1053	303244	6572731	33.80	10.70	0.003	8.6
BBSS_0282D	296826	6576788	27.90	4.59	0.019	2.4	BBSS_1054	303119	6572731	24.30	5.37	0.006	10.5
BBSS_0283	296701	6576788	31.90	3.64	0.012	5.2	BBSS_1055	302994	6572731	32.00	6.85	0.002	8.7
BBSS_0284	296576	6576788	33.60	3.18	0.001	0.7	BBSS_1056	302869	6572731	144.00	11.00	0.016	6.2
BBSS_0285	296451	6576788	36.80	3.68	0.005	3.0	BBSS_1057	302744	6572731	27.40	4.55	0.005	30.7
BBSS_0286	296326	6576788	42.00	3.84	0.005	7.3	BBSS_1058	302619	6572731	28.60	5.60	0.006	5.3
BBSS_0287	296201	6576788	41.80	3.56	0.004	8.1	BBSS_1059	302494	6572731	36.10	5.56	0.004	6.2
BBSS_0288	299201	6576663	30.40	3.69	0.007	1.0	BBSS_1060	302369	6572731	25.40	6.19	0.004	12.8
BBSS_0289	299076	6576663	45.50	3.91	0.006	11.3	BBSS_1061	303369	6572606	28.00	5.06	0.005	2.6
BBSS_0290	298951	6576663	29.00	5.78	0.002	1.6	BBSS_1062	303244	6572606	56.00	11.80	0.003	3.0
BBSS_0291	298826	6576663	33.70	8.25	0.005	3.8	BBSS_1063	303119	6572606	27.40	6.12	0.003	3.5
BBSS_0292	298701	6576663	19.20	4.12	0.004	3.1	BBSS_1064	302994	6572606	30.80	5.98	0.003	4.5
BBSS_0293	298576	6576663	20.30	2.80	0.005	2.9	BBSS_1065	302869	6572606	323.00	20.20	0.029	19.0

Sample	East	North	Li (ppm)	Cs (ppm)	Ta (ppm)	Au (ppb)	Sample	East	North	Li (ppm)	Cs (ppm)	Ta (ppm)	Au (ppb)
BBSS_0294	298451	6576663	11.80	2.08	0.002	5.1	BBSS_1066	302744	6572606	38.80	5.57	0.006	7.7
BBSS_0295	298326	6576663	19.20	4.58	0.004	6.0	BBSS_1067	302619	6572606	36.50	8.00	0.004	11.0
BBSS_0296	298201	6576663	23.80	6.01	0.004	4.0	BBSS_1068	302494	6572606	46.90	5.74	0.004	8.1
BBSS_0297	298076	6576663	22.10	5.91	0.004	2.8	BBSS_1069	302369	6572606	27.40	5.10	0.003	7.2
BBSS_0298	297951	6576663	26.10	6.42	0.003	2.7	BBSS_1070	303369	6572481	47.90	7.44	0.004	3.6
BBSS_0299	297826	6576663	15.60	7.61	0.002	6.5	BBSS_1071	303244	6572481	84.30	8.07	0.001	2.1
BBSS_0300	297701	6576663	29.40	7.32	0.003	7.6	BBSS_1072	303119	6572481	72.60	7.11	0.001	3.8
BBSS_0301	297576	6576663	22.90	2.52	0.001	4.1	BBSS_1073	302994	6572481	59.80	10.50	0.004	6.3
BBSS_0302	297451	6576663	53.30	4.62	0.004	3.3	BBSS_1074	302869	6572481	324.00	39.60	0.026	21.1
BBSS_0303	297326	6576663	32.30	4.66	0.007	9.2	BBSS_1075	302744	6572481	60.20	8.19	0.001	13.8
BBSS_0304	297201	6576663	37.20	4.62	0.004	4.7	BBSS_1076	302619	6572481	42.00	6.84	0.003	8.6
BBSS_0305	297076	6576663	22.60	3.04	0.004	6.0	BBSS_1077	302494	6572481	33.10	4.57	0.003	6.5
BBSS_0306	296951	6576663	25.50	3.52	0.003	3.4	BBSS_1078	302369	6572481	37.00	3.35	0.002	5.2
BBSS_0307	296826	6576663	35.70	4.06	0.007	3.1	BBSS_1078D	302369	6572481	20.60	3.20	0.002	2.6
BBSS_0308	296701	6576663	31.00	4.02	0.005	1.8	BBSS_1079	303369	6572356	61.70	9.55	0.003	4.6
BBSS_0309	296576	6576663	26.30	3.41	0.001	2.5	BBSS_1080	303244	6572356	68.00	10.30	0.002	2.5
BBSS_0310	296451	6576663	40.40	4.20	0.002	4.4	BBSS_1081	303119	6572356	54.60	11.40	0.003	5.6
BBSS_0311	296326	6576663	45.90	4.08	0.009	10.2	BBSS_1082	302994	6572356	63.40	8.90	0.004	3.1
BBSS_0312	296201	6576663	43.00	4.34	0.006	5.5	BBSS_1083	302869	6572356	45.30	5.84	0.002	17.0
BBSS_0313	299201	6576538	25.80	3.10	0.003	7.0	BBSS_1084	302744	6572356	65.00	10.00	0.002	21.4
BBSS_0314	299076	6576538	21.30	3.36	0.004	0.9	BBSS_1085	302619	6572356	31.30	3.99	0.003	8.1
BBSS_0315	298951	6576538	17.70	3.18	0.002	1.9	BBSS_1086	302494	6572356	28.40	4.53	0.002	3.7
BBSS_0316	298826	6576538	33.10	4.10	0.003	3.3	BBSS_1087	302369	6572356	14.10	4.92	0.002	1.4
BBSS_0317	298701	6576538	19.20	4.72	0.004	3.9	BBSS_1088	303244	6572231	61.60	10.50	0.002	2.5
BBSS_0318	298576	6576538	22.30	9.61	0.003	5.8	BBSS_1089	303119	6572231	39.30	5.12	0.004	2.3
BBSS_0319	298451	6576538	36.00	5.88	0.004	6.7	BBSS_1090	302994	6572231	67.20	8.93	0.002	4.6
BBSS_0320	298326	6576538	30.40	4.80	0.006	6.1	BBSS_1091	302869	6572231	62.20	7.41	0.005	9.0
BBSS_0321	298201	6576538	11.90	6.54	0.001	4.8	BBSS_1092	302744	6572231	72.00	8.99	0.006	87.6
BBSS_0322	298076	6576538	22.60	7.81	0.003	4.7	BBSS_1093	302619	6572231	48.10	14.00	0.004	6.4
BBSS_0322D	298076	6576538	26.50	8.78	0.003	3.9	BBSS_1094	302494	6572231	21.80	8.20	0.002	3.0
BBSS_0323	297951	6576538	15.00	2.47		1.6	BBSS_1095	302369	6572231	19.50	2.30	0.002	6.4
BBSS_0324	297826	6576538	31.70	5.73	0.001	5.8	BBSS_1096	303244	6572106	49.00	7.62	0.006	6.5
BBSS_0325	297701	6576538	42.10	7.71	0.004	10.6	BBSS_1097	303119	6572106	43.80	6.07	0.004	5.7
BBSS_0326	297576	6576538	25.00	3.00	0.001	8.7	BBSS_1098	302994	6572106	45.70	5.34	0.002	4.4
BBSS_0327	297451	6576538	22.20	3.35	0.001	5.9	BBSS_1099	302869	6572106	60.40	5.41	0.003	3.2
BBSS_0328	297326	6576538	18.20	3.59	0.002	15.4	BBSS_1100	302744	6572106	42.00	10.50	0.004	13.0
BBSS_0329	297201	6576538	14.90	3.30	0.001	14.2	BBSS_1101	302619	6572106	44.60	3.19	0.002	67.0
BBSS_0330	297076	6576538	27.00	3.25	0.003	8.6	BBSS_1102	302494	6572106	5.81	3.29		6.9
BBSS_0331	296951	6576538	14.50	2.65	0.001	3.1	BBSS_1103	302369	6572106	10.50	4.91		3.1
BBSS_0332	296826	6576538	23.90	4.25	0.002	3.8	BBSS_1104	303119	6571981	21.30	4.35	0.001	1.9
BBSS_0333	296701	6576538	19.30	2.46	0.002	1.6	BBSS_1105	302994	6571981	42.90	5.07	0.001	6.8
BBSS_0334	296576	6576538	46.60	3.44	0.001	3.9	BBSS_1106	302869	6571981	28.00	10.80		2.7
BBSS_0335	296451	6576538	37.60	3.35	0.011	9.3	BBSS_1107	302744	6571981	36.00	14.70	0.005	6.8
BBSS_0336	296326	6576538	44.00	3.74	0.007	22.5	BBSS_1108	302619	6571981	17.80	9.88	0.002	39.2
BBSS_0337	296201	6576538	37.20	3.44	0.002	16.3	BBSS_1109	302494	6571981	14.00	5.98		3.6
BBSS_0338	299076	6576413	28.90	4.29	0.006	13.5	BBSS_1110	302369	6571981	7.39	2.05		2.7
BBSS_0339	298951	6576413	29.90	3.11	0.003	5.0	BBSS_1111	303119	6571856	30.10	5.20	0.001	1.9
BBSS_0340	298826	6576413	23.80	2.49	0.002	5.2	BBSS_1112	302994	6571856	58.10	13.70	0.001	3.4
BBSS_0341	298701	6576413	30.40	2.69	0.003	3.3	BBSS_1113	302869	6571856	50.90	56.30	0.001	4.5
BBSS_0342	298576	6576413	24.20	2.65	0.002	3.2	BBSS_1114	302744	6571856	43.80	17.10	0.002	5.4
BBSS_0343	298451	6576413	23.50	2.95	0.001	2.2	BBSS_1115	302619	6571856	16.40	5.12	0.002	18.2
BBSS_0344	298326	6576413	21.30	3.23	0.002	4.0	BBSS_1116	302494	6571856	11.50	2.30	0.003	4.5
BBSS_0345	298201	6576413	17.40	3.32	0.002	2.8	BBSS_1117	302369	6571856	12.50	3.18	0.001	2.4
BBSS_0346	298076	6576413	15.60	5.77	0.002	3.7	BBSS_1118	302994	6571731	36.30	6.62		2.4
BBSS_0347	297951	6576413	13.10	1.94	0.001	2.5	BBSS_1118D	302994	6571731	56.80	8.80	0.001	4.6
BBSS_0348	297826	6576413	30.30	4.92	0.006	5.4	BBSS_1119	302869	6571731	84.60	34.00	0.002	3.7
BBSS_0349	297701	6576413	22.90	6.05	0.002	5.0	BBSS_1120	302744	6571731	45.80	13.20	0.002	4.0
BBSS_0350	297576	6576413	36.70	4.04	0.003	11.0	BBSS_1121	302619	6571731	21.90	4.82	0.001	2.7
BBSS_0351	297451	6576413	30.90	3.52	0.002	8.6	BBSS_1122	302494	6571731	15.20	7.53	0.001	5.0
BBSS_0352	297326	6576413	28.30	3.59	0.002	8.4	BBSS_1123	302369	6571731	17.90	6.59	0.002	15.8
BBSS_0353	297201	6576413	29.50	2.72		3.5	BBSS_1124	302994	6571606	74.50	12.60	0.002	3.6

Sample	East	North	Li (ppm)	Cs (ppm)	Ta (ppm)	Au (ppb)	Sample	East	North	Li (ppm)	Cs (ppm)	Ta (ppm)	Au (ppb)
BBSS_0354	297076	6576413	31.30	4.33	0.004	4.3	BBSS_1125	302869	6571606	70.50	24.70	0.016	4.0
BBSS_0355	296951	6576413	29.80	3.50	0.007	3.3	BBSS_1126	302744	6571606	40.50	12.80	0.010	3.5
BBSS_0356	296826	6576413	20.60	2.67	0.002	3.1	BBSS_1127	302619	6571606	31.10	14.40	0.002	29.1
BBSS_0357	296701	6576413	36.30	3.34		3.4	BBSS_1128	302494	6571606	26.50	7.60	0.001	3.4
BBSS_0358	296576	6576413	31.40	3.11	0.001	4.8	BBSS_1129	302369	6571606	23.00	4.68	0.001	4.3
BBSS_0359	296451	6576413	32.20	2.69	0.002	8.9	BBSS_1130	302869	6571481	50.60	5.63	0.001	3.0
BBSS_0360	296326	6576413	59.60	3.97	0.002	8.2	BBSS_1131	302744	6571481	33.90	10.20	0.008	4.9
BBSS_0361	296201	6576413	40.40	3.25	0.003	15.4	BBSS_1132	302619	6571481	28.20	12.10	0.003	4.5
BBSS_0362	297576	6576288	20.50	2.76	0.001	6.7	BBSS_1133	302494	6571481	22.20	3.99	0.003	5.5
BBSS_0362D	297576	6576288	34.60	3.10	0.002	9.9	BBSS_1134	302369	6571481	30.30	3.28	0.002	7.3
BBSS_0363	297451	6576288	46.60	3.89	0.002	7.8	BBSS_1135	302869	6571356	44.70	11.40	0.006	1.8
BBSS_0364	297326	6576288	19.50	2.75		1.6	BBSS_1136	302744	6571356	62.90	13.20	0.004	3.5
BBSS_0365	297201	6576288	40.30	4.16	0.001	3.4	BBSS_1137	302619	6571356	35.80	6.49	0.002	1.4
BBSS_0366	297076	6576288	29.40	4.60	0.002	2.7	BBSS_1138	302494	6571356	46.90	9.14	0.003	1.8
BBSS_0367	296951	6576288	30.70	3.05	0.002	3.9	BBSS_1139	302369	6571356	27.30	3.01	0.003	7.1
BBSS_0368	296826	6576288	19.90	3.40	0.002	2.1	BBSS_1140	302244	6571356	12.00	6.13		3.4
BBSS_0369	296701	6576288	48.30	2.83	0.003	5.8	BBSS_1141	302119	6571356	25.90	2.23	0.005	5.6
BBSS_0370	296576	6576288	40.80	3.50	0.006	15.5	BBSS_1142	301994	6571356	14.90	1.68	0.002	5.6
BBSS_0371	296451	6576288	43.70	3.37	0.004	22.2	BBSS_1143	301869	6571356	23.70	1.59	0.002	4.1
BBSS_0372	296326	6576288	55.70	3.80	0.002	11.9	BBSS_1144	301744	6571356	23.30	2.13	0.004	2.9
BBSS_0373	296201	6576288	53.90	4.20	0.002	4.4	BBSS_1145	301619	6571356	20.00	2.09	0.003	3.7
BBSS_0374	298058	6573117	42.00	3.08	0.004	4.7	BBSS_1146	301494	6571356	18.60	1.82	0.002	11.8
BBSS_0375	297933	6573117	58.60	3.69	0.007	1.9	BBSS_1147	301369	6571356	10.90	2.04	0.002	3.7
BBSS_0376	297808	6573117	47.10	2.74	0.003	6.8	BBSS_1148	301244	6571356	12.70	2.09	0.002	6.0
BBSS_0377	297683	6573117	20.00	2.48	0.001	3.1	BBSS_1149	302869	6571231	22.10	3.42	0.002	3.7
BBSS_0378	297558	6573117	20.00	3.34	0.002	2.0	BBSS_1150	302744	6571231	45.50	10.80	0.006	3.3
BBSS_0379	297433	6573117	19.40	3.45		2.8	BBSS_1151	302619	6571231	57.40	9.99	0.003	4.7
BBSS_0380	297308	6573117	21.60	2.34	0.001	5.6	BBSS_1152	302494	6571231	30.90	4.04		2.4
BBSS_0381	297183	6573117	24.60	2.93	0.002	2.1	BBSS_1153	302369	6571231	12.20	4.49		10.2
BBSS_0382	297058	6573117	35.10	2.64	0.004	3.9	BBSS_1154	302244	6571231	18.50	2.09		3.8
BBSS_0383	296933	6573117	21.50	2.28	0.007	4.3	BBSS_1155	302119	6571231	8.53	2.03		4.0
BBSS_0384	296808	6573117	22.80	2.16	0.005	3.5	BBSS_1156	301994	6571231	12.20	2.20	0.002	3.1
BBSS_0385	296683	6573117	18.80	2.19	0.006	3.5	BBSS_1157	301869	6571231	10.50	1.72		5.3
BBSS_0386	296558	6573117	23.50	3.77	0.005	4.7	BBSS_1158	301744	6571231	19.00	2.01	0.001	6.6
BBSS_0387	296433	6573117	17.50	4.13	0.006	2.3	BBSS_1158D	301744	6571231	21.40	2.04	0.001	5.2
BBSS_0388	296308	6573117	16.40	3.52	0.001	1.0	BBSS_1159	301619	6571231	21.60	2.10	0.003	7.5
BBSS_0389	298058	6572992	30.20	2.73	0.004	8.3	BBSS_1160	301494	6571231	21.70	2.85	0.002	5.5
BBSS_0390	297933	6572992	25.20	2.58	0.004	5.1	BBSS_1161	301369	6571231	25.90	2.49	0.007	8.6
BBSS_0391	297808	6572992	26.30	2.67	0.008	4.7	BBSS_1162	301244	6571231	42.50	3.28	0.005	8.3
BBSS_0392	297683	6572992	19.80	2.25	0.003	3.2	BBSS_1163	302869	6571106	26.00	2.09	0.001	4.8
BBSS_0393	297558	6572992	9.26	2.34	0.002	2.6	BBSS_1164	302744	6571106	12.50	2.64	0.002	3.4
BBSS_0394	297433	6572992	13.20	3.51	0.002	1.8	BBSS_1165	302619	6571106	19.40	2.88	0.002	3.8
BBSS_0395	297308	6572992	14.20	1.60		2.6	BBSS_1166	302494	6571106	17.70	3.36	0.003	1.9
BBSS_0396	297183	6572992	27.20	2.60	0.002	5.8	BBSS_1167	302369	6571106	9.77	5.06		8.1
BBSS_0397	297058	6572992	22.50	3.34	0.003	3.0	BBSS_1168	302244	6571106	29.40	2.51	0.002	10.9
BBSS_0398	296933	6572992	44.80	2.97	0.005	2.5	BBSS_1169	302119	6571106	15.10	2.07	0.001	14.3
BBSS_0399	296808	6572992	32.90	2.97	0.006	5.0	BBSS_1170	301994	6571106	6.38	1.76		5.4
BBSS_0400	296683	6572992	19.40	3.58	0.002	1.3	BBSS_1171	301869	6571106	7.93	1.56	0.001	2.5
BBSS_0401	296558	6572992	17.70	2.86	0.004	4.4	BBSS_1172	301744	6571106	12.20	4.27	0.001	2.5
BBSS_0402	296433	6572992	18.90	3.60	0.003	2.1	BBSS_1173	301619	6571106	15.40	2.27	0.002	4.1
BBSS_0403	296308	6572992	29.60	3.16	0.003	0.9	BBSS_1174	301494	6571106	8.05	2.50	0.001	2.9
BBSS_0404	298058	6572867	11.80	2.50	0.001	1.7	BBSS_1175	301369	6571106	19.60	1.74	0.001	6.2
BBSS_0405	297933	6572867	18.80	2.37	0.005	3.2	BBSS_1176	301244	6571106	11.30	1.69	0.002	5.9
BBSS_0406	297808	6572867	26.40	3.47	0.006	4.4	BBSS_1177	302869	6570981	17.00	2.93	0.002	2.7
BBSS_0407	297683	6572867	18.90	2.15	0.005	2.7	BBSS_1178	302744	6570981	14.40	4.20	0.001	2.8
BBSS_0408	297558	6572867	13.70	5.40	0.002	4.2	BBSS_1179	302619	6570981	27.80	6.76	0.002	3.7
BBSS_0409	297433	6572867	5.02	3.33		2.8	BBSS_1180	302494	6570981	32.00	5.58	0.005	2.1
BBSS_0410	297308	6572867	12.00	2.20	0.002	0.8	BBSS_1181	302369	6570981	12.50	2.67	0.002	8.0
BBSS_0411	297183	6572867	18.00	2.45	0.002	1.5	BBSS_1182	302244	6570981	18.30	3.49	0.002	6.1
BBSS_0412	297058	6572867	13.50	2.23	0.002	2.7	BBSS_1183	302119	6570981	17.30	2.20		14.3
BBSS_0413	296933	6572867	21.20	3.06	0.002	1.9	BBSS_1184	301994	6570981	19.10	4.12	0.001	21.3

Sample	East	North	Li (ppm)	Cs (ppm)	Ta (ppm)	Au (ppb)	Sample	East	North	Li (ppm)	Cs (ppm)	Ta (ppm)	Au (ppb)
BBSS_0413D	296933	6572867	21.30	3.33	0.001	3.7	BBSS_1185	301869	6570981	7.33	2.26		6.1
BBSS_0414	296808	6572867	26.40	3.67	0.002	4.9	BBSS_1186	301744	6570981	12.50	2.53	0.002	11.2
BBSS_0415	296683	6572867	28.80	4.40	0.004	5.5	BBSS_1187	301619	6570981	12.60	3.32	0.001	6.1
BBSS_0416	296558	6572867	23.30	3.65	0.005	1.4	BBSS_1188	301494	6570981	21.40	3.57	0.002	4.6
BBSS_0417	296433	6572867	23.90	3.32	0.003	2.2	BBSS_1189	301369	6570981	24.50	2.39	0.006	7.7
BBSS_0418	296308	6572867	28.40	3.24	0.011	2.3	BBSS_1190	301244	6570981	10.00	2.24	0.001	4.4
BBSS_0419	298058	6572742	16.40	3.70	0.003	3.4	BBSS_1191	302869	6570856	15.40	2.51	0.001	1.5
BBSS_0420	297933	6572742	17.60	5.00	0.001	2.9	BBSS_1192	302744	6570856	11.10	2.05	0.001	3.6
BBSS_0421	297808	6572742	9.91	2.72		5.9	BBSS_1193	302494	6570856	38.50	14.50	0.006	2.6
BBSS_0422	297683	6572742	5.38	1.41		3.4	BBSS_1194	302369	6570856	4.09	2.45		5.2
BBSS_0423	297558	6572742	7.54	2.34	0.002	4.9	BBSS_1195	302244	6570856	28.80	7.12	0.003	11.0
BBSS_0424	297433	6572742	13.00	2.09	0.002	5.5	BBSS_1196	302119	6570856	14.50	3.53	0.001	8.6
BBSS_0425	297308	6572742	10.80	1.93	0.002	5.6	BBSS_1197	301994	6570856	15.20	3.99	0.003	13.8
BBSS_0426	297183	6572742	25.20	3.65	0.002	1.6	BBSS_1198	301869	6570856	20.80	4.67	0.002	10.9
BBSS_0427	297058	6572742	18.90	2.91	0.004	1.1	BBSS_1198D	301869	6570856	25.90	5.17	0.002	11.9
BBSS_0428	296933	6572742	21.20	3.76	0.006	2.9	BBSS_1199	301744	6570856	22.80	4.75	0.001	9.1
BBSS_0429	296808	6572742	18.20	8.26	0.003	3.7	BBSS_1200	301619	6570856	31.30	2.82	0.002	5.1
BBSS_0430	296683	6572742	20.20	4.72	0.003	3.4	BBSS_1201	301494	6570856	29.40	3.68	0.004	3.1
BBSS_0431	296558	6572742	29.00	4.66	0.011	2.4	BBSS_1202	301369	6570856	10.20	2.60	0.001	10.0
BBSS_0432	296433	6572742	19.50	4.09	0.003	1.7	BBSS_1203	301244	6570856	15.40	2.56	0.002	3.8
BBSS_0433	296308	6572742	21.40	3.18	0.006	2.2	BBSS_1204	302869	6570731	12.70	2.18		4.3
BBSS_0434	298058	6572617	19.80	3.47	0.002	2.1	BBSS_1205	302744	6570731	13.90	2.04	0.001	2.5
BBSS_0435	297933	6572617	15.40	3.14		4.1	BBSS_1206	302119	6570731	25.10	3.56	0.003	16.4
BBSS_0436	297808	6572617	15.50	3.10		3.5	BBSS_1207	301994	6570731	25.70	2.53	0.004	21.2
BBSS_0437	297683	6572617	18.80	1.64		7.0	BBSS_1208	301869	6570731	22.40	2.81	0.004	5.0
BBSS_0438	297558	6572617	4.69	1.11		9.7	BBSS_1209	301744	6570731	10.40	3.11	0.001	3.4
BBSS_0439	297433	6572617	13.50	1.78	0.001	3.5	BBSS_1210	301619	6570731	20.70	2.62	0.002	3.0
BBSS_0440	297308	6572617	10.40	5.94		4.7	BBSS_1211	301494	6570731	16.50	4.60	0.003	4.6
BBSS_0441	297183	6572617	19.30	2.35	0.001	2.8	BBSS_1212	301369	6570731	17.40	3.79	0.004	5.7
BBSS_0442	297058	6572617	23.60	3.15	0.001	1.4	BBSS_1213	301244	6570731	18.00	2.76	0.002	4.3
BBSS_0443	296933	6572617	16.60	2.31	0.002	3.2	BBSS_1214	302869	6570606	8.71	1.82		3.4
BBSS_0444	296808	6572617	30.60	4.80	0.003	2.8	BBSS_1215	302744	6570606	13.10	1.99	0.002	3.2
BBSS_0445	296683	6572617	20.30	3.43	0.004	2.9	BBSS_1216	301994	6570606	29.10	2.59	0.002	9.7
BBSS_0446	296558	6572617	32.10	6.82	0.007	1.2	BBSS_1217	301869	6570606	23.90	3.57	0.001	6.1
BBSS_0447	296433	6572617	35.40	3.84	0.005	4.7	BBSS_1218	301744	6570606	31.40	2.61	0.003	8.5
BBSS_0448	296308	6572617	29.70	3.69	0.005	4.2	BBSS_1219	301619	6570606	24.20	3.57	0.001	2.6
BBSS_0449	298058	6572492	21.50	2.94	0.002	1.9	BBSS_1220	301494	6570606	14.70	3.83	0.003	7.9
BBSS_0450	297933	6572492	31.40	2.80	0.002	4.5	BBSS_1221	301369	6570606	19.60	2.38	0.002	5.3
BBSS_0451	297808	6572492	26.80	4.90	0.008	6.2	BBSS_1222	301244	6570606	15.20	2.96	0.002	7.1
BBSS_0452	297683	6572492	28.50	7.07	0.002	3.1	BBSS_1223	302869	6570481	23.10	2.40	0.002	4.5
BBSS_0453	297558	6572492	23.50	8.87	0.003	4.7	BBSS_1224	302744	6570481	13.80	1.85	0.001	5.4
BBSS_0453D	297558	6572492	16.10	8.88	0.003	2.2	BBSS_1225	302619	6570481	14.90	1.42		3.2
BBSS_0454	297433	6572492	22.80	2.31	0.002	4.0	BBSS_1226	301994	6570481	24.70	2.75	0.002	12.8
BBSS_0455	297308	6572492	21.70	2.55	0.002	4.8	BBSS_1227	301869	6570481	22.40	3.67		4.8
BBSS_0456	297183	6572492	24.00	2.59	0.001	2.9	BBSS_1228	301744	6570481	17.90	1.86	0.001	3.9
BBSS_0457	297058	6572492	25.70	2.93	0.002	2.7	BBSS_1229	301619	6570481	19.80	3.41		4.0
BBSS_0458	296933	6572492	24.30	2.86	0.008	3.1	BBSS_1230	301494	6570481	24.00	2.70		4.5
BBSS_0459	296808	6572492	40.10	3.11	0.002	1.9	BBSS_1231	301369	6570481	15.70	2.20		4.7
BBSS_0460	296683	6572492	27.00	4.91	0.005	2.4	BBSS_1232	301244	6570481	13.30	2.22	0.002	6.0
BBSS_0461	296558	6572492	31.20	7.99	0.003	3.0	BBSS_1233	302869	6570356	22.60	3.24		4.6
BBSS_0462	296433	6572492	23.50	2.87	0.002	4.1	BBSS_1234	302744	6570356	13.50	2.26		2.1
BBSS_0463	296308	6572492	32.00	4.87	0.005	2.7	BBSS_1235	302619	6570356	14.60	1.91		3.4
BBSS_0464	298058	6572367	22.10	2.90	0.002	2.1	BBSS_1236	301994	6570356	12.10	2.29		4.8
BBSS_0465	297933	6572367	33.40	4.28	0.002	2.9	BBSS_1237	301869	6570356	10.00	2.62		4.1
BBSS_0466	297808	6572367	20.80	2.58	0.004	2.8	BBSS_1238	301744	6570356	13.10	2.16		7.3
BBSS_0467	297683	6572367	11.90	1.98	0.002	2.5	BBSS_1239	301619	6570356	12.20	1.79		2.1
BBSS_0468	297558	6572367	11.20	1.77	0.003	2.6	BBSS_1240	301494	6570356	12.80	2.12	0.001	12.0
BBSS_0469	297433	6572367	5.98	1.75		2.9	BBSS_1241	301369	6570356	15.30	3.70		6.6
BBSS_0470	297308	6572367	14.10	1.94	0.002	2.3	BBSS_1242	301244	6570356	10.90	2.60		4.8
BBSS_0471	297183	6572367	14.50	2.78	0.003	2.5	BBSS_1243	302994	6570231	33.00	3.37	0.011	7.0
BBSS_0472	297058	6572367	14.70	3.85	0.003	2.8	BBSS_1243D	302994	6570231	47.80	3.47	0.005	5.5

Sample	East	North	Li (ppm)	Cs (ppm)	Ta (ppm)	Au (ppb)	Sample	East	North	Li (ppm)	Cs (ppm)	Ta (ppm)	Au (ppb)
BBSS_0473	296933	6572367	10.80	2.39	0.004	2.6	BBSS_1244	302869	6570231	18.30	2.68		1.3
BBSS_0474	296808	6572367	12.90	1.98	0.004	2.1	BBSS_1245	302744	6570231	10.30	2.35	0.002	4.1
BBSS_0475	296683	6572367	14.60	3.09	0.003	2.4	BBSS_1246	302619	6570231	12.10	2.94	0.007	3.2
BBSS_0476	296558	6572367	32.40	2.87	0.002	2.7	BBSS_1247	301994	6570231	14.40	2.81	0.001	3.5
BBSS_0477	296433	6572367	17.10	4.96	0.001	2.1	BBSS_1248	301869	6570231	11.70	2.04	0.005	3.1
BBSS_0478	296308	6572367	44.60	7.10	0.006	3.1	BBSS_1249	301744	6570231	12.60	3.07	0.029	4.0
BBSS_0479	298058	6572242	22.60	2.59	0.002	2.0	BBSS_1250	301619	6570231	15.40	2.18		5.7
BBSS_0480	297933	6572242	15.80	2.14	0.003	3.2	BBSS_1251	301494	6570231	19.20	3.31	0.005	7.6
BBSS_0481	297808	6572242	22.40	2.34	0.003	2.4	BBSS_1252	301369	6570231	21.20	4.21	0.002	1.8
BBSS_0482	297683	6572242	21.80	2.01	0.003	3.3	BBSS_1253	301244	6570231	10.10	2.70		1.8
BBSS_0483	297558	6572242	24.00	2.13	0.001		BBSS_1254	302869	6570106	25.60	3.07	0.005	8.7
BBSS_0484	297433	6572242	22.70	2.01	0.001	3.4	BBSS_1255	302744	6570106	23.40	2.69		7.9
BBSS_0485	297308	6572242	21.20	8.83	0.006	3.1	BBSS_1256	302619	6570106	35.30	2.93	0.005	2.9
BBSS_0486	297183	6572242	20.30	3.84	0.008	1.8	BBSS_1257	301994	6570106	13.20	2.42	0.003	6.6
BBSS_0487	297058	6572242	18.00	2.37	0.006	1.9	BBSS_1258	301869	6570106	13.20	1.86	0.002	2.4
BBSS_0488	296933	6572242	20.80	3.09	0.003	0.9	BBSS_1259	301744	6570106	14.30	2.70	0.002	1.6
BBSS_0489	296808	6572242	15.90	2.72	0.008	2.6	BBSS_1260	301619	6570106	18.50	5.08	0.013	1.1
BBSS_0490	296683	6572242	18.30	5.13	0.008	2.3	BBSS_1261	301494	6570106	10.30	2.26	0.002	
BBSS_0491	296558	6572242	17.80	3.06	0.002	3.1	BBSS_1262	301369	6570106	27.90	24.60	0.008	5.3
BBSS_0492	296433	6572242	11.50	2.89	0.004	3.1	BBSS_1263	301244	6570106	15.20	1.95		2.7
BBSS_0493	296308	6572242	14.60	3.71	0.003	4.4	BBSS_1264	302994	6569981	13.80	4.36	0.012	20.2
BBSS_0493D	296308	6572242	15.90	4.20	0.003	4.9	BBSS_1265	302869	6569981	33.40	4.16	0.003	30.9
BBSS_0494	298058	6572117	19.80	2.79	0.002	2.7	BBSS_1266	302744	6569981	34.10	4.37	0.007	19.7
BBSS_0495	297933	6572117	20.30	2.58	0.002	2.5	BBSS_1267	301994	6569981	10.30	2.20		0.6
BBSS_0496	297808	6572117	38.30	2.79	0.001	2.2	BBSS_1268	301869	6569981	16.20	4.11	0.003	5.5
BBSS_0497	297683	6572117	23.50	2.95	0.002	1.0	BBSS_1269	301744	6569981	12.10	2.45		1.0
BBSS_0498	297558	6572117	13.50	2.49	0.001	2.3	BBSS_1270	301619	6569981	27.60	4.49	0.004	2.5
BBSS_0499	297433	6572117	13.60	2.86	0.002	2.4	BBSS_1271	301494	6569981	31.00	5.13	0.002	2.6
BBSS_0500	297308	6572117	14.30	3.12	0.004	0.9	BBSS_1272	301369	6569981	5.77	6.81	0.001	5.7
BBSS_0501	297183	6572117	13.60	2.67	0.005	1.5	BBSS_1273	301244	6569981	13.80	2.42	0.003	2.9
BBSS_0502	297058	6572117	6.40	5.83	0.002	0.7	BBSS_1274	302994	6569856	32.30	3.68	0.007	7.5
BBSS_0503	296933	6572117	13.80	4.06	0.006	4.7	BBSS_1275	302869	6569856	25.70	2.88	0.008	14.7
BBSS_0504	296808	6572117	16.50	2.14	0.002	2.0	BBSS_1276	302744	6569856	24.90	3.17	0.010	14.8
BBSS_0505	296683	6572117	12.00	1.77	0.003	4.5	BBSS_1277	302619	6569856	26.80	4.15	0.016	12.8
BBSS_0506	296558	6572117	14.90	2.07	0.003	2.0	BBSS_1278	302494	6569856	10.10	2.14	0.001	6.1
BBSS_0507	296433	6572117	17.30	2.39	0.002	2.1	BBSS_1279	302369	6569856	17.80	2.70	0.001	3.6
BBSS_0508	296308	6572117	22.80	2.52	0.005	1.3	BBSS_1280	302244	6569856	5.27	3.46		7.4
BBSS_0509	298058	6571992	28.30	3.30	0.003	3.6	BBSS_1281	302119	6569856	6.15	1.62	0.001	4.2
BBSS_0510	297933	6571992	21.40	2.42	0.002	2.5	BBSS_1282	301744	6569856	10.20	4.54	0.001	5.0
BBSS_0511	297808	6571992	21.20	2.70	0.003	2.2	BBSS_1283	301619	6569856	16.20	2.80	0.017	4.3
BBSS_0512	297683	6571992	15.50	4.56	0.002	4.1	BBSS_1283D	301619	6569856	7.73	2.44	0.014	8.5
BBSS_0513	297558	6571992	22.90	2.89	0.002	1.7	BBSS_1284	301494	6569856	13.80	2.32	0.004	6.6
BBSS_0514	297433	6571992	14.20	2.39	0.002	2.0	BBSS_1285	301369	6569856	14.80	2.13	0.003	7.0
BBSS_0515	297308	6571992	16.80	2.60	0.002	1.8	BBSS_1286	301244	6569856	15.60	3.01	0.002	2.8
BBSS_0516	297183	6571992	17.40	2.10	0.002	1.3	BBSS_1287	302994	6569731	12.60	3.59	0.006	5.9
BBSS_0517	297058	6571992	16.80	2.87	0.002	3.6	BBSS_1288	302869	6569731	21.80	4.00	0.009	7.9
BBSS_0518	296933	6571992	23.80	3.54	0.007	2.8	BBSS_1289	302744	6569731	19.10	3.25	0.014	30.4
BBSS_0519	296808	6571992	18.50	3.38	0.003	2.1	BBSS_1290	302619	6569731	20.30	2.47	0.002	12.5
BBSS_0520	296683	6571992	14.30	2.08	0.002	3.3	BBSS_1291	302494	6569731	21.90	2.93	0.006	4.6
BBSS_0521	296558	6571992	21.70	2.34	0.004	2.6	BBSS_1292	302369	6569731	5.42	2.69	0.002	7.7
BBSS_0522	296433	6571992	14.70	1.98	0.003	1.3	BBSS_1293	302244	6569731	11.70	4.77	0.002	2.1
BBSS_0523	296308	6571992	20.90	2.34	0.004	5.6	BBSS_1294	302119	6569731	4.26	1.93	0.001	4.3
BBSS_0524	298058	6571867	11.70	3.50	0.005	4.0	BBSS_1295	301994	6569731	9.22	1.66		1.9
BBSS_0525	297933	6571867	10.60	2.27	0.002	4.3	BBSS_1296	301869	6569731	11.70	2.07		4.3
BBSS_0526	297808	6571867	23.50	3.31	0.005	5.4	BBSS_1297	301744	6569731	5.14	3.40		2.3
BBSS_0527	297683	6571867	12.40	3.95	0.002	1.4	BBSS_1298	301369	6569731	1.40	1.80	0.004	16.8
BBSS_0528	297558	6571867	21.70	3.37	0.013	2.9	BBSS_1299	301244	6569731	19.40	2.12	0.004	41.5
BBSS_0529	297433	6571867	13.00	2.38	0.002	2.2	BBSS_1300	302994	6569606	15.30	3.04	0.010	6.0
BBSS_0530	297308	6571867	16.60	2.38	0.005	1.5	BBSS_1301	302869	6569606	32.10	2.88	0.003	11.8
BBSS_0531	297183	6571867	17.40	2.39	0.002	3.0	BBSS_1302	302744	6569606	25.80	3.95	0.006	7.8
BBSS_0532	297058	6571867	19.70	2.22	0.003	0.9	BBSS_1303	302619	6569606	45.40	4.44	0.006	9.6

Sample	East	North	Li (ppm)	Cs (ppm)	Ta (ppm)	Au (ppb)	Sample	East	North	Li (ppm)	Cs (ppm)	Ta (ppm)	Au (ppb)
BBSS_0533	296933	6571867	6.24	1.48	0.001	2.5	BBSS_1304	302494	6569606	33.50	4.38	0.009	8.5
BBSS_0533D	296933	6571867	9.24	1.57		3.5	BBSS_1305	302369	6569606	8.48	2.53	0.003	6.0
BBSS_0534	296808	6571867	18.20	1.75	0.003	1.9	BBSS_1306	302244	6569606	17.40	4.73	0.003	5.7
BBSS_0535	296683	6571867	21.10	2.51	0.005	2.3	BBSS_1307	302119	6569606	18.90	3.11	0.002	7.6
BBSS_0536	296558	6571867	19.80	1.85	0.004	1.8	BBSS_1308	301994	6569606	1.91	1.60	0.002	2.1
BBSS_0537	296433	6571867	6.07	1.24		4.3	BBSS_1309	301869	6569606	20.10	1.58		3.3
BBSS_0538	296308	6571867	5.88	1.48	0.002	1.9	BBSS_1310	301744	6569606	22.80	3.04	0.001	8.2
BBSS_0539	298058	6571742	42.30	2.05	0.002	4.2	BBSS_1311	301619	6569606	34.40	3.29	0.002	16.5
BBSS_0540	297933	6571742	22.80	2.28	0.002	1.1	BBSS_1312	301494	6569606	36.90	4.29	0.014	9.6
BBSS_0541	297808	6571742	8.58	2.98	0.001	2.1	BBSS_1313	301369	6569606	30.00	3.66	0.006	12.9
BBSS_0542	298058	6571617	13.20	3.27	0.003	3.0	BBSS_1314	301244	6569606	22.50	3.34	0.010	44.7
BBSS_0543	297933	6571617	13.60	3.08	0.001	4.4	BBSS_1315	302994	6569481	26.30	3.96	0.010	8.2
BBSS_0544	297808	6571617	14.70	2.03	0.002	3.3	BBSS_1316	302869	6569481	30.40	3.31	0.004	1.7
BBSS_0545	298058	6571492	19.20	3.52	0.001	2.3	BBSS_1317	302744	6569481	37.00	4.06	0.007	1.2
BBSS_0546	297933	6571492	6.08	3.64	0.002	4.4	BBSS_1318	302619	6569481	24.80	3.94	0.007	5.6
BBSS_0547	297808	6571492	30.30	2.13	0.002	3.9	BBSS_1319	302494	6569481	30.00	6.10	0.005	3.3
BBSS_0548	298058	6571367	27.00	2.46	0.008	7.3	BBSS_1320	302369	6569481	17.00	2.98	0.001	5.7
BBSS_0549	297933	6571367	27.10	2.55	0.003	2.9	BBSS_1321	302244	6569481	19.40	3.44	0.004	4.5
BBSS_0550	297808	6571367	38.20	3.29	0.005	19.2	BBSS_1322	302119	6569481	22.30	3.26	0.003	4.3
BBSS_0551	298058	6571242	36.30	3.63	0.004	5.7	BBSS_1323	301994	6569481	26.70	3.50	0.005	11.1
BBSS_0552	297933	6571242	34.10	2.48	0.003	3.2	BBSS_1324	301869	6569481	26.40	3.24	0.007	8.5
BBSS_0553	297808	6571242	63.90	2.93	0.006	5.3	BBSS_1325	301744	6569481	37.50	3.52	0.004	5.6
BBSS_0554	298058	6571117	27.20	4.16	0.004	4.2	BBSS_1326	301619	6569481	47.50	3.49	0.008	9.9
BBSS_0555	297933	6571117	40.50	3.15	0.005	6.9	BBSS_1327	301494	6569481	45.00	3.29	0.002	24.3
BBSS_0556	297808	6571117	31.50	3.42	0.004	12.2	BBSS_1328	301369	6569481	43.70	3.46	0.007	14.8
BBSS_0557	298308	6570992	12.00	3.33	0.005	5.3	BBSS_1329	301244	6569481	37.00	3.20		8.8
BBSS_0558	298183	6570992	24.10	3.30	0.006	6.4	BBSS_1330	303119	6569356	19.40	2.73	0.002	5.6
BBSS_0559	298058	6570992	28.30	3.42	0.006	8.0	BBSS_1331	302994	6569356	46.30	3.61	0.006	2.4
BBSS_0560	297933	6570992	17.40	3.72	0.008	6.0	BBSS_1332	302869	6569356	21.90	3.62	0.005	17.1
BBSS_0561	297808	6570992	21.90	3.71	0.017	3.9	BBSS_1333	302744	6569356	42.80	3.90	0.004	9.3
BBSS_0562	298308	6570867	22.80	2.56	0.002	4.9	BBSS_1333D	302744	6569356	49.80	4.28	0.010	6.6
BBSS_0563	298183	6570867	19.20	2.14	0.002	6.9	BBSS_1334	302619	6569356	18.50	3.13	0.006	7.7
BBSS_0564	298058	6570867	26.10	3.14	0.006	19.3	BBSS_1335	302494	6569356	30.30	6.58	0.007	2.9
BBSS_0565	297933	6570867	35.40	3.65	0.003	12.1	BBSS_1336	302369	6569356	22.00	6.11	0.004	6.7
BBSS_0566	297808	6570867	26.20	3.41	0.006	3.2	BBSS_1337	302244	6569356	8.01	1.95	0.004	11.6
BBSS_0567	298308	6570742	39.30	3.46	0.005	7.8	BBSS_1338	302119	6569356	27.90	3.63	0.004	11.6
BBSS_0568	298183	6570742	41.30	3.52	0.004	9.4	BBSS_1339	301994	6569356	37.50	5.32	0.008	14.3
BBSS_0569	298058	6570742	41.10	3.50	0.005	13.3	BBSS_1340	301869	6569356	43.80	4.91	0.006	10.5
BBSS_0570	297933	6570742	47.50	3.92	0.006	9.8	BBSS_1341	301744	6569356	30.40	3.99	0.004	10.4
BBSS_0571	297808	6570742	29.60	3.18	0.004	3.3	BBSS_1342	301619	6569356	35.70	4.98	0.005	18.2
BBSS_0572	298308	6570617	16.10	2.24	0.003	10.3	BBSS_1343	301494	6569356	29.20	4.81	0.007	13.8
BBSS_0573	298183	6570617	35.40	3.44	0.006	8.9	BBSS_1344	301369	6569356	43.40	4.18	0.008	30.2
BBSS_0573D	298183	6570617	34.50	3.45	0.003	7.4	BBSS_1345	301244	6569356	22.30	3.01	0.003	18.4
BBSS_0574	298058	6570617	31.90	3.32	0.005	9.7	BBSS_1346	303119	6569231	18.30	2.69	0.003	4.7
BBSS_0575	297933	6570617	30.20	3.01	0.002	9.1	BBSS_1347	302994	6569231	16.60	2.79	0.001	4.9
BBSS_0576	297808	6570617	35.10	3.34	0.015	11.6	BBSS_1348	302869	6569231	39.30	4.77	0.003	5.7
BBSS_0577	298308	6570492	22.70	3.01	0.001	4.1	BBSS_1349	302744	6569231	23.90	3.57	0.004	11.4
BBSS_0578	298183	6570492	30.80	3.53	0.004	7.2	BBSS_1350	302619	6569231	24.50	1.89	0.003	7.8
BBSS_0579	298058	6570492	39.30	3.66	0.006	17.4	BBSS_1351	302494	6569231	46.60	13.90	0.006	2.4
BBSS_0580	297933	6570492	38.40	3.63	0.008	15.0	BBSS_1352	302369	6569231	36.40	12.30	0.004	12.2
BBSS_0581	297808	6570492	32.10	3.35	0.008	14.5	BBSS_1353	303119	6569106	10.60	1.76	0.002	8.4
BBSS_0582	298308	6570367	30.30	3.23	0.003	9.5	BBSS_1354	302994	6569106	16.00	1.89	0.002	3.9
BBSS_0583	298183	6570367	18.60	2.34	0.001	5.9	BBSS_1355	302869	6569106	26.80	2.32	0.002	4.8
BBSS_0584	298058	6570367	23.80	2.91	0.004	12.1	BBSS_1356	302744	6569106	14.40	1.02	0.003	5.8
BBSS_0585	297933	6570367	27.00	3.17	0.005	10.8	BBSS_1357	302619	6569106	11.40	1.20	0.003	5.6
BBSS_0586	297808	6570367	44.10	4.02	0.003	9.6	BBSS_1358	302494	6569106	59.10	20.60	0.003	1.9
BBSS_0587	297683	6570367	27.20	3.92	0.005	5.7	BBSS_1359	302369	6569106	42.40	10.30	0.005	4.7
BBSS_0588	297558	6570367	29.90	2.96	0.005	8.8	BBSS_1360	303244	6568981	28.90	4.25	0.004	1.2
BBSS_0589	297433	6570367	28.30	3.31	0.007	10.6	BBSS_1361	303119	6568981	34.20	4.34	0.003	4.0
BBSS_0590	297308	6570367	25.70	3.12	0.006	8.8	BBSS_1362	302994	6568981	16.80	2.25	0.004	3.7
BBSS_0591	297183	6570367	29.80	4.04	0.006	7.8	BBSS_1363	302869	6568981	7.20	1.60	0.001	4.0

Sample	East	North	Li (ppm)	Cs (ppm)	Ta (ppm)	Au (ppb)	Sample	East	North	Li (ppm)	Cs (ppm)	Ta (ppm)	Au (ppb)
BBSS_0592	297058	6570367	32.20	4.09	0.002	22.2	BBSS_1364	302744	6568981	18.30	1.54	0.002	3.1
BBSS_0593	296933	6570367	14.10	2.99	0.002	7.0	BBSS_1365	302619	6568981	26.10	2.60	0.003	1.8
BBSS_0594	296808	6570367	10.00	3.42	0.006	2.9	BBSS_1366	302494	6568981	87.40	58.20	0.006	4.5
BBSS_0595	296683	6570367	25.70	3.39	0.005	3.8	BBSS_1367	302369	6568981	34.10	7.12	0.007	6.5
BBSS_0596	296558	6570367	38.20	4.15	0.007	9.1	BBSS_1368	303244	6568856	18.30	2.80	0.004	2.6
BBSS_0597	296433	6570367	33.50	4.02	0.006	9.3	BBSS_1369	303119	6568856	30.60	3.96	0.004	3.6
BBSS_0598	296308	6570367	30.00	3.50	0.007	30.3	BBSS_1370	302994	6568856	22.10	3.90	0.004	5.7
BBSS_0599	298308	6570242	52.60	2.85	0.003	11.8	BBSS_1371	302869	6568856	17.00	1.64	0.002	1.1
BBSS_0600	298183	6570242	65.80	3.64	0.006	5.0	BBSS_1372	302744	6568856	6.06	1.14	0.003	3.4
BBSS_0601	298058	6570242	32.30	2.23	0.002	2.7	BBSS_1373	302619	6568856	30.00	5.08	0.003	2.8
BBSS_0602	297933	6570242	25.50	4.32	0.003	1.7	BBSS_1373D	302619	6568856	30.00	4.71	0.002	2.3
BBSS_0603	297808	6570242	43.50	2.68	0.005	5.7	BBSS_1374	302494	6568856	14.20	4.97	0.003	6.8
BBSS_0604	297683	6570242	42.40	3.95	0.007	5.4	BBSS_1375	302369	6568856	23.50	4.61	0.004	9.3
BBSS_0605	297558	6570242	34.80	3.02	0.002	3.2	BBSS_1376	303244	6568731	10.60	1.73	0.001	3.5
BBSS_0606	297433	6570242	29.60	2.94	0.011	7.3	BBSS_1377	303119	6568731	15.70	1.59	0.002	4.7
BBSS_0607	297308	6570242	35.30	2.78	0.004	4.2	BBSS_1378	302994	6568731	8.59	1.56		6.2
BBSS_0608	297183	6570242	38.10	3.00	0.002	9.1	BBSS_1379	302869	6568731	17.70	2.07	0.003	3.8
BBSS_0609	297058	6570242	32.00	3.75	0.004	10.2	BBSS_1380	302744	6568731	18.90	2.20	0.003	2.4
BBSS_0610	296933	6570242	38.80	4.35	0.010	17.4	BBSS_1381	302619	6568731	33.80	8.80	0.002	3.1
BBSS_0611	296808	6570242	30.30	4.24	0.016	8.3	BBSS_1382	302494	6568731	30.40	6.20	0.005	6.0
BBSS_0612	296683	6570242	18.00	3.39	0.008	1.8	BBSS_1383	302369	6568731	29.60	6.10	0.006	4.7
BBSS_0613	296558	6570242	20.30	3.42	0.004	3.7	BBSS_1384	303369	6568606	38.00	3.23	0.002	2.1
BBSS_0613D	296558	6570242	15.20	2.95	0.004	1.8	BBSS_1385	303244	6568606	19.20	1.86	0.003	4.0
BBSS_0614	296433	6570242	31.00	4.42	0.005	10.2	BBSS_1386	303119	6568606	27.60	2.55	0.002	2.1
BBSS_0615	296308	6570242	20.10	3.84	0.005	20.8	BBSS_1387	302994	6568606	25.70	3.60	0.004	2.0
BBSS_0616	298308	6570117	43.70	2.88	0.005	3.4	BBSS_1388	302869	6568606	9.17	2.09	0.007	4.9
BBSS_0617	298183	6570117	59.20	3.20	0.005	5.5	BBSS_1389	302744	6568606	24.90	5.49	0.008	1.5
BBSS_0618	298058	6570117	43.30	2.55	0.003	10.2	BBSS_1390	302619	6568606	39.90	9.80	0.002	6.1
BBSS_0619	297933	6570117	31.10	2.65	0.004	4.1	BBSS_1391	302494	6568606	17.80	3.66	0.004	5.2
BBSS_0620	297808	6570117	32.00	2.45	0.002	2.5	BBSS_1392	302369	6568606	21.20	3.82	0.003	8.1
BBSS_0621	297683	6570117	46.20	4.05	0.004	13.7	BBSS_1393	303369	6568481	17.90	1.23	0.002	3.0
BBSS_0622	297558	6570117	48.00	3.54	0.007	5.5	BBSS_1394	303244	6568481	27.20	2.10	0.004	2.4
BBSS_0623	297433	6570117	36.60	3.67	0.004	6.7	BBSS_1395	303119	6568481	18.80	2.12	0.002	2.9
BBSS_0624	297308	6570117	28.80	2.93	0.002	7.0	BBSS_1396	302994	6568481	16.10	1.81	0.002	2.3
BBSS_0625	297183	6570117	45.50	3.89	0.004	5.3	BBSS_1397	302869	6568481	20.40	3.33	0.005	3.6
BBSS_0626	297058	6570117	32.10	3.53	0.002	5.3	BBSS_1398	302744	6568481	46.10	14.20	0.008	3.4
BBSS_0627	296933	6570117	24.00	3.87	0.005	8.2	BBSS_1399	302619	6568481	16.10	2.26	0.003	2.0
BBSS_0628	296808	6570117	36.50	3.87	0.005	8.0	BBSS_1400	302494	6568481	11.60	6.63	0.003	3.7
BBSS_0629	296683	6570117	29.20	4.00	0.004	6.3	BBSS_1401	302369	6568481	20.50	4.66	0.004	2.8
BBSS_0630	296558	6570117	24.40	2.91	0.003	2.4	BBSS_1402	303369	6568356	19.00	2.65	0.002	3.1
BBSS_0631	296433	6570117	31.80	4.08	0.005	31.2	BBSS_1403	303244	6568356	26.10	2.86	0.003	6.3
BBSS_0632	296308	6570117	30.40	3.61	0.003	6.8	BBSS_1404	303119	6568356	28.80	2.62	0.003	2.9
BBSS_0633	298308	6569992	45.20	2.94	0.003	4.9	BBSS_1405	302994	6568356	28.20	4.79	0.007	1.8
BBSS_0634	298183	6569992	55.50	2.60	0.002	5.5	BBSS_1406	302869	6568356	22.00	8.98	0.007	2.9
BBSS_0635	298058	6569992	27.30	1.74	0.001	4.0	BBSS_1407	302744	6568356	39.90	11.70	0.004	2.5
BBSS_0636	297933	6569992	29.80	1.84	0.002	3.0	BBSS_1408	302619	6568356	22.20	6.12	0.003	1.6
BBSS_0637	297808	6569992	34.90	2.17	0.001	2.9	BBSS_1409	302494	6568356	11.40	4.31	0.002	1.4
BBSS_0638	297683	6569992	38.70	2.47	0.002	3.4	BBSS_1410	302369	6568356	15.60	4.82	0.002	3.4
BBSS_0639	297558	6569992	33.30	3.17	0.002	3.9	BBSS_1411	303494	6568231	29.80	6.67	0.003	2.2
BBSS_0640	297433	6569992	33.20	3.21	0.005	2.0	BBSS_1412	303369	6568231	19.10	3.11	0.003	3.0
BBSS_0641	297308	6569992	36.60	2.59	0.002	4.7	BBSS_1413	303244	6568231	33.60	5.01	0.004	1.1
BBSS_0642	297183	6569992	33.90	3.89	0.004	4.4	BBSS_1413D	303244	6568231	27.80	4.42	0.003	1.6
BBSS_0643	297058	6569992	37.60	3.93	0.004	4.6	BBSS_1414	303119	6568231	21.00	2.45	0.003	2.2
BBSS_0644	296933	6569992	49.90	4.29	0.004	3.3	BBSS_1415	302994	6568231	22.60	2.61	0.003	2.9
BBSS_0645	296808	6569992	32.60	3.82	0.002	4.4	BBSS_1416	302869	6568231	32.20	6.88	0.007	3.0
BBSS_0646	296683	6569992	31.60	3.96	0.004	12.2	BBSS_1417	302744	6568231	24.30	4.54	0.006	1.8
BBSS_0647	296558	6569992	19.80	3.00	0.002	7.7	BBSS_1418	302619	6568231	23.00	6.03	0.003	1.2
BBSS_0648	296433	6569992	18.60	3.31	0.004	4.7	BBSS_1419	302494	6568231	17.70	2.65	0.004	3.5
BBSS_0649	296308	6569992	31.40	4.08	0.005	13.9	BBSS_1420	302369	6568231	19.70	4.94	0.003	1.9
BBSS_0650	298308	6569867	29.00	2.39	0.006	5.0	BBSS_1421	303494	6568106	23.10	4.15	0.002	3.0
BBSS_0651	298183	6569867	50.50	3.02	0.002	3.3	BBSS_1422	303369	6568106	44.40	7.88	0.004	3.4

Sample	East	North	Li (ppm)	Cs (ppm)	Ta (ppm)	Au (ppb)	Sample	East	North	Li (ppm)	Cs (ppm)	Ta (ppm)	Au (ppb)
BBSS_0652	298058	6569867	78.80	3.22	0.002	7.3	BBSS_1423	303244	6568106	42.10	4.06	0.008	5.6
BBSS_0653	297933	6569867	61.50	3.25	0.003	5.0	BBSS_1424	303119	6568106	14.40	1.79	0.005	3.3
BBSS_0653D	297933	6569867	56.40	2.88	0.002	2.8	BBSS_1425	302994	6568106	32.30	4.24	0.005	2.9
BBSS_0654	297808	6569867	58.80	2.89	0.013	7.0	BBSS_1426	302869	6568106	32.20	5.49	0.006	3.2
BBSS_0655	297683	6569867	25.80	2.70	0.002	3.7	BBSS_1427	302744	6568106	25.70	2.91	0.004	3.5
BBSS_0656	297558	6569867	38.50	2.68	0.006	2.8	BBSS_1428	302619	6568106	25.60	5.34	0.004	3.0
BBSS_0657	297433	6569867	50.70	2.65	0.002	4.2	BBSS_1429	302494	6568106	20.00	4.95	0.002	3.4
BBSS_0658	297308	6569867	31.80	3.08	0.002	5.6	BBSS_1430	302369	6568106	23.10	4.64	0.003	5.2
BBSS_0659	297183	6569867	43.30	3.68	0.003	7.7	BBSS_1431	303494	6567981	38.70	4.98	0.004	5.4
BBSS_0660	297058	6569867	22.20	3.77	0.002	6.1	BBSS_1432	303369	6567981	29.90	6.03	0.003	4.9
BBSS_0661	296933	6569867	40.40	4.12	0.004	3.8	BBSS_1433	303244	6567981	35.10	5.22	0.003	2.9
BBSS_0662	296808	6569867	21.80	3.31	0.003	4.9	BBSS_1434	303119	6567981	37.30	6.04	0.004	2.0
BBSS_0663	296683	6569867	27.20	3.82	0.002	6.4	BBSS_1435	302994	6567981	26.30	4.94	0.003	3.1
BBSS_0664	296558	6569867	23.20	3.48	0.002	14.0	BBSS_1436	302869	6567981	23.70	5.51	0.003	1.8
BBSS_0665	296433	6569867	19.60	2.96	0.002	2.9	BBSS_1437	302744	6567981	11.90	3.14	0.003	2.4
BBSS_0666	296308	6569867	15.80	3.26	0.002	3.9	BBSS_1438	302619	6567981	42.10	9.42	0.006	2.4
BBSS_0667	298308	6569742	25.00	2.31	0.002	4.6	BBSS_1439	302494	6567981	10.00	2.09	0.002	3.9
BBSS_0668	298183	6569742	30.50	2.74	0.005	3.5	BBSS_1440	302369	6567981	21.00	8.12	0.002	4.3
BBSS_0669	298058	6569742	32.40	2.65	0.003	4.0	BBSS_1441	303619	6567856	43.00	3.62	0.003	3.5
BBSS_0670	297933	6569742	34.00	2.65	0.002	4.8	BBSS_1442	303494	6567856	46.70	7.97	0.002	3.4
BBSS_0671	297808	6569742	30.40	2.40	0.002	3.8	BBSS_1443	303369	6567856	35.00	5.50	0.004	5.0
BBSS_0672	297683	6569742	24.40	2.89	0.005	5.4	BBSS_1444	303244	6567856	25.00	4.81	0.004	5.0
BBSS_0673	297558	6569742	30.50	3.93	0.001	2.0	BBSS_1445	303119	6567856	7.04	2.10		7.8
BBSS_0674	297433	6569742	35.70	2.79	0.002	4.9	BBSS_1446	302994	6567856	20.40	4.25	0.003	6.8
BBSS_0675	297308	6569742	50.90	3.12	0.011	3.5	BBSS_1447	302869	6567856	18.70	5.24	0.002	5.9
BBSS_0676	297183	6569742	51.90	3.71	0.002	3.4	BBSS_1448	302744	6567856	22.90	6.03	0.002	3.1
BBSS_0677	297058	6569742	23.40	4.50	0.005	7.9	BBSS_1449	302619	6567856	20.60	6.01	0.003	3.9
BBSS_0678	296933	6569742	28.70	4.96	0.005	6.9	BBSS_1450	302494	6567856	16.30	4.88	0.002	2.8
BBSS_0679	296808	6569742	20.50	3.73	0.001	5.7	BBSS_1451	302369	6567856	15.80	4.83	0.001	2.2
BBSS_0680	296683	6569742	24.70	4.31	0.004	4.1	BBSS_1452	301754	6579465	38.90	4.25	0.010	19.0
BBSS_0681	296558	6569742	20.60	3.75	0.005	11.3	BBSS_1453	301754	6579215	42.10	4.73	0.005	17.9
BBSS_0682	296433	6569742	15.10	3.37	0.004	2.5	BBSS_1454	301754	6579090	47.90	4.57	0.005	19.3
BBSS_0683	296308	6569742	22.20	3.45	0.005	4.8	BBSS_1455	301754	6578965	37.20	3.93	0.006	17.1
BBSS_0684	298308	6569617	31.80	2.95	0.004	5.3	BBSS_1456	301754	6578840	53.20	5.20	0.006	14.6
BBSS_0685	298183	6569617	31.90	2.63	0.002	2.7	BBSS_1457	301754	6578715	56.80	4.35	0.004	14.6
BBSS_0686	298058	6569617	34.00	2.52	0.003	2.8	BBSS_1458	301754	6578590	34.60	3.97	0.008	14.7
BBSS_0687	297933	6569617	49.20	2.58	0.004	4.5	BBSS_1459	301754	6578465	41.70	4.46	0.007	16.5
BBSS_0688	297808	6569617	22.80	3.17	0.007	5.0	BBSS_1460	301754	6578340	52.60	4.54	0.005	11.8
BBSS_0689	297683	6569617	26.90	3.60	0.020	5.6	BBSS_1461	301879	6579465	62.60	4.70	0.007	12.4
BBSS_0690	297558	6569617	28.10	5.62	0.007	2.0	BBSS_1462	301879	6579340	47.30	4.73	0.008	13.6
BBSS_0691	297433	6569617	20.70	3.49	0.004	3.6	BBSS_1463	301879	6579215	34.90	4.29	0.006	10.0
BBSS_0692	297308	6569617	41.50	3.47	0.008	2.0	BBSS_1464	301879	6579090	27.30	3.10	0.004	13.8
BBSS_0693	297183	6569617	33.90	4.15	0.007	3.6	BBSS_1465	301879	6578965	48.20	4.74	0.003	15.7
BBSS_0693D	297183	6569617	32.60	3.86	0.006	2.2	BBSS_1466	301879	6578840	37.50	4.58	0.007	12.9
BBSS_0694	297058	6569617	22.90	7.22	0.005	3.9	BBSS_1467	301879	6578715	38.50	4.66	0.004	16.4
BBSS_0695	296933	6569617	22.90	14.00	0.004	6.2	BBSS_1468	301879	6578590	38.80	4.79	0.006	18.6
BBSS_0696	296808	6569617	23.90	4.07	0.006	5.1	BBSS_1469	301879	6578465	38.10	5.29	0.007	11.1
BBSS_0697	296683	6569617	18.70	4.06	0.007	4.8	BBSS_1470	301879	6578340	45.00	6.75	0.003	11.4
BBSS_0698	296558	6569617	20.20	3.28	0.002	8.7	BBSS_1471	301879	6578215	44.80	4.46	0.005	7.8
BBSS_0699	296433	6569617	24.80	4.34	0.005	8.4	BBSS_1472	301879	6578090	48.40	4.46	0.004	10.1
BBSS_0700	296308	6569617	20.40	3.78	0.004	2.6	BBSS_1473	302004	6579465	58.40	4.99	0.006	11.5
BBSS_0701	298308	6569492	26.80	2.57	0.008	3.7	BBSS_1474	302004	6579340	40.40	3.79	0.005	13.5
BBSS_0702	298183	6569492	23.30	2.43	0.002	4.4	BBSS_1475	302004	6579215	25.00	3.64	0.003	9.8
BBSS_0703	298058	6569492	27.00	4.32	0.005	3.3	BBSS_1476	302004	6579090	48.30	6.03	0.007	13.5
BBSS_0704	297933	6569492	29.90	2.00	0.005	4.9	BBSS_1477	302004	6578965	44.90	4.61	0.004	17.3
BBSS_0705	297808	6569492	20.70	2.91	0.002	5.0	BBSS_1478	302004	6578840	28.40	3.22	0.003	10.2
BBSS_0706	297683	6569492	35.00	7.57	0.005	1.9	BBSS_1479	302004	6578715	51.10	4.95	0.004	13.4
BBSS_0707	297558	6569492	23.50	4.16	0.003	2.0	BBSS_1480	302004	6578590	41.50	4.43	0.006	20.2
BBSS_0708	297433	6569492	20.30	3.97	0.005	1.7	BBSS_1481	302004	6578465	44.90	5.61	0.005	23.0
BBSS_0709	297308	6569492	41.60	3.68	0.005	4.0	BBSS_1482	302004	6578340	29.80	4.45	0.005	12.6
BBSS_0710	297183	6569492	23.60	2.97	0.004	2.3	BBSS_1483	302004	6578215	51.60	4.92	0.005	10.7

Sample	East	North	Li (ppm)	Cs (ppm)	Ta (ppm)	Au (ppb)	Sample	East	North	Li (ppm)	Cs (ppm)	Ta (ppm)	Au (ppb)
BBSS_0711	297058	6569492	52.50	3.24	0.010	5.9	BBSS_1484	302004	6578090	27.70	3.56	0.006	9.0
BBSS_0712	296933	6569492	36.70	3.63	0.005	3.2	BBSS_1485	302129	6579590	41.10	4.39	0.005	9.3
BBSS_0713	296808	6569492	30.00	4.36	0.006	3.3	BBSS_1486	302129	6579465	48.50	4.16	0.005	7.3
BBSS_0714	296683	6569492	26.50	4.54	0.007	3.5	BBSS_1487	302129	6579340	27.60	4.01	0.003	3.8
BBSS_0715	296558	6569492	24.90	4.50	0.006	10.1	BBSS_1488	302129	6579215	22.20	4.73	0.004	7.7
BBSS_0716	296433	6569492	24.50	4.24	0.004	12.3	BBSS_1489	302129	6579090	39.60	5.40	0.013	10.4
BBSS_0717	296308	6569492	21.00	4.18	0.005	2.8	BBSS_1490	302129	6578965	23.70	5.35	0.005	13.9
BBSS_0718	298308	6569367	49.80	3.58	0.006	8.7	BBSS_1491	302129	6578840	40.00	4.58	0.005	7.1
BBSS_0719	298183	6569367	28.00	2.42	0.004	4.3	BBSS_1492	302129	6578715	38.50	4.65	0.005	8.2
BBSS_0720	298058	6569367	31.40	1.66	0.002	6.8	BBSS_1493	302129	6578590	42.30	3.96	0.004	13.0
BBSS_0721	297933	6569367	26.40	1.69	0.001	2.9	BBSS_1494	302129	6578465	47.60	4.58	0.004	24.1
BBSS_0722	297808	6569367	22.80	8.05	0.002	4.7	BBSS_1495	302129	6578340	47.40	4.12	0.006	20.5
BBSS_0723	297683	6569367	36.80	3.35	0.003	3.9	BBSS_1496	302129	6578215	42.80	4.46	0.005	7.6
BBSS_0724	297558	6569367	31.10	4.76	0.002	2.4	BBSS_1497	302129	6578090	43.00	5.70	0.004	7.1
BBSS_0725	297433	6569367	40.90	2.31	0.002	2.3	BBSS_1498	302254	6579590	42.40	4.11	0.004	5.3
BBSS_0726	297308	6569367	48.60	1.87	0.004	2.4	BBSS_1499	302254	6579465	31.20	3.99	0.004	8.8
BBSS_0727	297183	6569367	31.40	2.48	0.002	2.7	BBSS_1500	302254	6579340	27.90	5.14	0.004	8.2
BBSS_0728	297058	6569367	36.30	3.13	0.007	5.3	BBSS_1501	302254	6579215	35.40	5.06	0.006	9.8
BBSS_0729	296933	6569367	17.00	2.06	0.002	11.9	BBSS_1502	302254	6579090	25.60	3.64	0.006	12.5
BBSS_0730	296808	6569367	23.00	3.92	0.003	14.6	BBSS_1503	302254	6578965	29.30	4.17	0.010	11.4
BBSS_0731	296683	6569367	43.90	4.43	0.008	2.5	BBSS_1504	302254	6578840	28.80	5.55	0.005	11.9
BBSS_0732	296558	6569367	32.90	3.41	0.004	6.9	BBSS_1505	302254	6578715	36.80	4.02	0.003	6.9
BBSS_0733	296433	6569367	33.30	3.84	0.006	5.7	BBSS_1506	302254	6578590	36.80	4.26	0.004	12.4
BBSS_0733D	296433	6569367	30.20	3.60	0.005	6.8	BBSS_1507	302254	6578465	41.00	4.21	0.005	17.3
BBSS_0734	296308	6569367	27.20	3.13	0.003	7.8	BBSS_1508	302254	6578340	32.40	5.09	0.006	14.3
BBSS_0735	298308	6569242	63.00	3.10	0.005	3.9	BBSS_1509	302379	6580215	47.90	4.83	0.011	15.3
BBSS_0736	298183	6569242	49.10	2.46	0.002	5.6	BBSS_1510	302379	6580090	31.90	4.06	0.003	9.4
BBSS_0737	298058	6569242	56.30	2.44	0.002	4.0	BBSS_1511	302379	6579965	46.50	4.64	0.007	10.6
BBSS_0738	297933	6569242	53.40	2.67	0.003	4.8	BBSS_1512	302379	6579840	64.80	4.47	0.003	8.1
BBSS_0739	297808	6569242	24.70	3.23	0.002	4.5	BBSS_1513	302379	6579715	36.00	3.95	0.004	6.1
BBSS_0740	297683	6569242	28.60	2.30	0.007	7.4	BBSS_1514	302379	6579590	38.40	4.34	0.002	7.0
BBSS_0741	297558	6569242	13.00	2.16	0.003	8.0	BBSS_1515	302379	6579465	50.00	4.21	0.004	10.7
BBSS_0742	297433	6569242	36.00	2.62	0.008	5.5	BBSS_1516	302379	6579340	33.40	3.91	0.004	8.6
BBSS_0743	297308	6569242	44.20	3.06	0.004	4.4	BBSS_1517	302379	6579215	53.70	5.32	0.013	7.2
BBSS_0744	297183	6569242	46.00	2.93	0.003	4.0	BBSS_1518	302379	6579090	19.20	3.45	0.002	22.4
BBSS_0745	297058	6569242	28.30	2.91	0.003	4.1	BBSS_1519	302379	6578965	30.90	4.19	0.005	38.8
BBSS_0746	296933	6569242	33.80	3.27	0.003	4.8	BBSS_1520	302379	6578840	23.60	3.37	0.003	22.7
BBSS_0747	296808	6569242	21.40	3.02	0.002	4.1	BBSS_1521	302379	6578715	38.40	3.33	0.003	7.5
BBSS_0748	296683	6569242	45.40	3.77	0.008	5.0	BBSS_1522	302504	6580215	73.40	5.51	0.010	12.3
BBSS_0749	296558	6569242	36.00	3.85	0.004	3.5	BBSS_1523	302504	6580090	51.00	5.28	0.006	11.8
BBSS_0750	296433	6569242	42.90	3.66	0.004	3.6	BBSS_1524	302504	6579965	29.50	3.25	0.002	8.6
BBSS_0751	296308	6569242	28.10	2.77	0.003	10.2	BBSS_1525	302504	6579840	37.60	3.97	0.003	7.5
BBSS_0752	298308	6569117	70.80	3.00	0.005	3.4	BBSS_1526	302504	6579715	25.00	4.43	0.006	5.9
BBSS_0753	298183	6569117	111.00	3.53	0.006	6.1	BBSS_1527	302504	6579590	32.50	3.67	0.003	8.5
BBSS_0754	298058	6569117	82.30	2.78	0.007	6.3	BBSS_1528	302504	6579465	32.60	4.96	0.007	7.0
BBSS_0755	297933	6569117	65.00	2.38	0.004	6.4	BBSS_1529	302504	6579340	26.60	3.57	0.004	5.2
BBSS_0756	297808	6569117	35.40	2.02	0.002	19.7	BBSS_1530	302504	6579215	27.90	4.29	0.008	4.0
BBSS_0757	297683	6569117	80.00	3.48	0.004	5.2	BBSS_1531	302504	6579090	29.10	4.43	0.003	13.3
BBSS_0758	297558	6569117	51.30	3.41	0.006	9.5	BBSS_1532	302629	6580215	38.40	3.78	0.004	10.2
BBSS_0759	297433	6569117	75.00	3.93	0.008	12.2	BBSS_1533	302629	6580090	24.50	2.21	0.004	11.1
BBSS_0760	297308	6569117	52.90	4.19	0.008	3.9	BBSS_1534	302629	6579965	25.70	3.07	0.005	10.3
BBSS_0761	297183	6569117	39.90	8.00	0.002	2.9	BBSS_1535	302629	6579840	23.70	3.02	0.004	6.7
BBSS_0762	297058	6569117	15.30	2.89	0.004	6.7	BBSS_1536	302629	6579715	33.80	5.02	0.005	4.4
BBSS_0763	296933	6569117	37.00	3.28	0.007	7.0	BBSS_1537	302629	6579590	26.60	4.65	0.003	4.2
BBSS_0764	296808	6569117	68.60	3.38	0.005	6.3	BBSS_1538	302629	6579465	23.80	3.83	0.004	5.9
BBSS_0765	296683	6569117	82.30	5.15	0.011	5.3	BBSS_1539	302629	6579340	21.50	4.69	0.003	5.5
BBSS_0766	296558	6569117	30.70	3.10	0.002	3.9	BBSS_1540	302754	6580215	42.00	4.65	0.003	5.3
BBSS_0767	296433	6569117	19.50	2.72	0.003	8.5	BBSS_1541	302754	6580090	34.90	4.66	0.005	11.4
BBSS_0768	296308	6569117	32.20	3.81	0.003	7.1	BBSS_1542	302754	6579965	21.80	2.31	0.006	8.8
BBSS_0769	298308	6568992	52.60	2.31	0.004	4.6	BBSS_1543	302754	6579840	22.70	3.12	0.005	5.6
BBSS_0770	298183	6568992	66.60	2.84	0.010	4.0	BBSS_1544	302754	6579715	19.50	3.86	0.005	4.5

Sample	East	North	Li (ppm)	Cs (ppm)	Ta (ppm)	Au (ppb)	Sample	East	North	Li (ppm)	Cs (ppm)	Ta (ppm)	Au (ppb)
BBSS_0771	298058	6568992	71.40	3.90	0.007	10.5	BBSS_1545	302879	6580215	49.00	5.32	0.003	6.6
							BBSS_1546	302879	6580090	34.30	4.88	0.005	7.0

Note: Li, Cs, Ta assays in parts per million (ppm), Au assays in parts per billion (ppb).

Appendix B

JORC Code, 2012 Edition – Table 1

Section 1 Sampling Techniques and Data

(Criteria in this section apply to all succeeding sections.)

Criteria	JORC Code explanation	Commentary
Sampling techniques	<ul style="list-style-type: none"> Nature and quality of sampling (egg cut channels, random chips, or specific specialised industry standard measurement tools appropriate to the minerals under investigation, such as down hole gamma sondes, or handheld XRF instruments, etc). These examples should not be taken as limiting the broad meaning of sampling. Include reference to measures taken to ensure sample representivity and the appropriate calibration of any measurement tools or systems used. Aspects of the determination of mineralisation that are Material to the Public Report. In cases where 'industry standard' work has been done this would be relatively simple (eg 'reverse circulation drilling was used to obtain 1 m samples from which 3 kg was pulverised to produce a 30 g charge for fire assay'). In other cases more explanation may be required, such as where there is coarse gold that has inherent sampling problems. Unusual commodities or mineralisation types (eg submarine nodules) may warrant disclosure of detailed information. 	<ul style="list-style-type: none"> 1581 soil samples were collected by BMGS staff as directed by Belararox Ltd. Collection of soil samples involved the removal of 10cm of surface material and the collection of soil at the "B Horizon". Approximately 1kg of soil was sieved to collect -2mm grain size fraction. Approximately 200g of the sieved soil was collected in soil geochemistry packets for analysis at the lab. All sample were submitted to Labwest Minerals Analysis Pty Ltd (Labwest) in Perth for UFF-PER analysis. UFF-PER analysis includes: <ul style="list-style-type: none"> Collection of <math><2\mu\text{m}</math> fraction from soil samples Analysis and reporting of Au plus full 50 element suite by ICP-MS/OES Including analysis of Rare Earth Elements
Drilling techniques	<ul style="list-style-type: none"> Drill type (eg core, reverse circulation, open-hole hammer, rotary air blast, auger, Bangka, sonic, etc) and details (eg core diameter, triple or standard tube, depth of diamond tails, face-sampling bit or other type, whether core is oriented and if so, by what method, etc). 	<ul style="list-style-type: none"> Not applicable – no drilling reported.
Drill sample recovery	<ul style="list-style-type: none"> Method of recording and assessing core and chip sample recoveries and results assessed. Measures taken to maximise sample recovery and ensure representative nature of the samples. Whether a relationship exists between sample recovery and grade and whether sample bias may have occurred due to preferential loss/gain of fine/coarse material. 	<ul style="list-style-type: none"> Not applicable – no drilling reported.
Logging	<ul style="list-style-type: none"> Whether core and chip samples have been geologically and geotechnically logged to a level of detail to support appropriate Mineral Resource estimation, mining studies and metallurgical studies. Whether logging is qualitative or quantitative in nature. Core (or costean, channel, etc) photography. The total length and percentage of the relevant intersections logged. 	<ul style="list-style-type: none"> All soil samples have been recorded and photographed in the field.
Sub-sampling techniques and sample preparation	<ul style="list-style-type: none"> If core, whether cut or sawn and whether quarter, half or all core taken. If non-core, whether riffled, tube sampled, rotary split, etc and whether sampled wet or dry. For all sample types, the nature, quality and appropriateness of the sample preparation technique. Quality control procedures adopted for all sub- 	<ul style="list-style-type: none"> Soil samples were carefully collected from B horizon where possible. Duplicate samples were collected in the field and submitted for analysis.

Criteria	JORC Code explanation	Commentary
	<p>sampling stages to maximise representivity of samples.</p> <ul style="list-style-type: none"> Measures taken to ensure that the sampling is representative of the in situ material collected, including for instance results for field duplicate/second-half sampling. Whether sample sizes are appropriate to the grain size of the material being sampled. 	
Quality of assay data and laboratory tests	<ul style="list-style-type: none"> The nature, quality and appropriateness of the assaying and laboratory procedures used and whether the technique is considered partial or total. For geophysical tools, spectrometers, handheld XRF instruments, etc, the parameters used in determining the analysis including instrument make and model, reading times, calibrations factors applied and their derivation, etc. Nature of quality control procedures adopted (eg standards, blanks, duplicates, external laboratory checks) and whether acceptable levels of accuracy (ie lack of bias) and precision have been established. 	<ul style="list-style-type: none"> All soil samples have been submitted to Labwest for analysis and reporting of Au plus full 50 element suite by ICP-MS/OES, Including analysis of Rare Earth Elements. Certified Reference Material (CRM) standards are included in the quality control procedures for the program. Standards, blanks, and internal laboratory checks have been included in the quality control procedures for the program.
Verification of sampling and assaying	<ul style="list-style-type: none"> The verification of significant intersections by either independent or alternative company personnel. The use of twinned holes. Documentation of primary data, data entry procedures, data verification, data storage (physical and electronic) protocols. Discuss any adjustment to assay data. 	<ul style="list-style-type: none"> All sample locations, logging details, and analytical data have been checked and uploaded into a secure database by a suitably qualified geologist.
Location of data points	<ul style="list-style-type: none"> Accuracy and quality of surveys used to locate drill holes (collar and down-hole surveys), trenches, mine workings and other locations used in Mineral Resource estimation. Specification of the grid system used. Quality and adequacy of topographic control. 	<ul style="list-style-type: none"> Soil sample locations have been surveyed by handheld GPS only, which is considered suitable for their intended purpose of reconnaissance geochemical assessment only, and not for the purpose of supporting Mineral Resource estimation. Soil location points were collected using a Garmin handheld GPS with an accuracy of +/-2m. Grid system used for soil sample locations is: Geodetic datum GDA94, projection MGA, Zone 51.
Data spacing and distribution	<ul style="list-style-type: none"> Data spacing for reporting of Exploration Results. Whether the data spacing and distribution is sufficient to establish the degree of geological and grade continuity appropriate for the Mineral Resource and Ore Reserve estimation procedure(s) and classifications applied. Whether sample compositing has been applied. 	<ul style="list-style-type: none"> Soil samples were collected on a 125m x 125m grid spacing. Soil sample location and density is considered suitable for their intended purpose of reconnaissance geochemical assessment only, and not for the purpose of supporting Mineral Resource estimation. No sample compositing has been completed as part of this program.
Orientation of data in relation to geological structure	<ul style="list-style-type: none"> Whether the orientation of sampling achieves unbiased sampling of possible structures and the extent to which this is known, considering the deposit type. If the relationship between the drilling orientation and the orientation of key mineralised structures is considered to have introduced a sampling bias, this should be assessed and reported if material. 	<ul style="list-style-type: none"> Soil sampling was conducted on a regular 125m x 125m grid to achieve unbiased sampling across geological features. No drilling has been undertaken as part of this program.
Sample security	<ul style="list-style-type: none"> The measures taken to ensure sample security. 	<ul style="list-style-type: none"> All samples were collected by onsite contractor personnel (BMGS) and freighted directly to the laboratory.
Audits or reviews	<ul style="list-style-type: none"> The results of any audits or reviews of sampling techniques and data. 	<ul style="list-style-type: none"> No external audits or reviews have been undertaken of the recent sampling techniques and data.

Section 2 Reporting of Exploration Results

(Criteria listed in the preceding section also apply to this section.)

Criteria	JORC Code explanation	Commentary
<i>Mineral tenement and land tenure status</i>	<ul style="list-style-type: none"> Type, reference name/number, location and ownership including agreements or material issues with third parties such as joint ventures, partnerships, overriding royalties, native title interests, historical sites, wilderness or national park and environmental settings. The security of the tenure held at the time of reporting along with any known impediments to obtaining a licence to operate in the area. 	<ul style="list-style-type: none"> All tenure is 100% owned by Belararox Limited. All tenements are in good standing with no known impediments to obtaining a licence to operate.
<i>Exploration done by other parties</i>	<ul style="list-style-type: none"> Acknowledgment and appraisal of exploration by other parties. 	<ul style="list-style-type: none"> Anaconda Mining Co. and Union Miniere Mining Co. (1966-1968). Prospecting for nickel. Unknown prospecting methods. Western Mining Corporation (1974-1982). Targeting gold and nickel mineralization – 150 RC drill holes north of Phoenix (outside Belararox tenure). Valiant Consolidated Ltd and Hillmin Gold Mines (1985-1989). Ground magnetics, soil sampling, rotary air blast (RAB) and reverse circulation (RC) drilling – discovery of Bacchus Gold deposit (outside Belararox tenure). Central Kalgoorlie Mines NL and Ashton Mining (1989-1991). Took over joint venture. Exploration that led to the development of a laterite gold resource. Samantha Gold NL (1992-1993). Identification of several aeromagnetic anomalies. Soil sampling, RAB/RC drilling. Company became Resolute Mining. Resolute Mining Ltd (1993). Systematic soil sampling on previously untested ground, RAB/RC drilling. 175 RAB drillholes drilled at Endeavour on 100m line spacing, highlighting several gold anomalies which lead to discovery of Bacchus, Gibraltar and Phoenix. Nexus Mining NL (1995-1998). Geological and structural mapping, soil geochemical sampling, Rab and diamond drilling, resource modelling, metallurgical testwork and Feasibility Study. Jervois Mining Ltd (2002). Mining operations at Bullabulling. Metals Exploration (1984-1985). Magnetic survey, soil sampling, RC drilling. Newcrest Mining Ltd JV with Fimiston Mining (1988-1993). Aerial photography, mapping, magnetics, soils, RAB, RC, diamond drilling. Defined Gecko laterite deposit. Tern Minerals NL (1990-1993). RAB drilling. Maynard and Associates (2009-2010). Mobile Metal Ion (MMI) soil sampling. Golden Eagle Mining Ltd (2010-2017) Aeromagnetic data interpretation, MMI, geological mapping, geological modelling, RAB, RC and diamond drilling.
<i>Geology</i>	<ul style="list-style-type: none"> Deposit type, geological setting and style of mineralisation. 	<ul style="list-style-type: none"> Belararox's Bullabulling Project area contains the 'Bali Monzogranite', a highly fractionated granite body associated with pervasive post-gold pegmatites and quartz veining, with most of the of regional Lithium projects located within a structural corridor adjacent to the Bali Monzogranite and similarly fractionated granitic pegmatite source rocks to the south.

Criteria	JORC Code explanation	Commentary
		<ul style="list-style-type: none"> The pegmatites are associated with the mafic metamorphic rocks adjacent to the Bali Monzogranite and are considered prospective for Lithium-Caesium-Tantalum (LCT) pegmatites, with additional gold targets identified as sheeted quartz veins.
Drill hole Information	<ul style="list-style-type: none"> A summary of all information material to the understanding of the exploration results including a tabulation of the following information for all Material drill holes: <ul style="list-style-type: none"> easting and northing of the drill hole collar elevation or RL (Reduced Level – elevation above sea level in metres) of the drill hole collar dip and azimuth of the hole down hole length and interception depth hole length. If the exclusion of this information is justified on the basis that the information is not Material and this exclusion does not detract from the understanding of the report, the Competent Person should clearly explain why this is the case. 	<ul style="list-style-type: none"> Not applicable – no drilling reported.
Data aggregation methods	<ul style="list-style-type: none"> In reporting Exploration Results, weighting averaging techniques, maximum and/or minimum grade truncations (eg cutting of high grades) and cut-off grades are usually Material and should be stated. Where aggregate intercepts incorporate short lengths of high grade results and longer lengths of low grade results, the procedure used for such aggregation should be stated and some typical examples of such aggregations should be shown in detail. The assumptions used for any reporting of metal equivalent values should be clearly stated. 	<ul style="list-style-type: none"> No weighting or aggregation applies.
Relationship between mineralisation widths and intercept lengths	<ul style="list-style-type: none"> These relationships are particularly important in the reporting of Exploration Results. If the geometry of the mineralisation with respect to the drill hole angle is known, its nature should be reported. If it is not known and only the down hole lengths are reported, there should be a clear statement to this effect (eg ‘down hole length, true width not known’). 	<ul style="list-style-type: none"> Not applicable – no drilling reported.
Diagrams	<ul style="list-style-type: none"> Appropriate maps and sections (with scales) and tabulations of intercepts should be included for any significant discovery being reported. These should include, but not be limited to a plan view of drill hole collar locations and appropriate sectional views. 	<ul style="list-style-type: none"> Refer to Figures in main text
Balanced reporting	<ul style="list-style-type: none"> Where comprehensive reporting of all Exploration Results is not practicable, representative reporting of both low and high grades and/or widths should be practiced to avoid misleading reporting of Exploration Results. 	<ul style="list-style-type: none"> All available exploration data is reported.
Other substantive exploration data	<ul style="list-style-type: none"> Other exploration data, if meaningful and material, should be reported including (but not limited to): geological observations; geophysical survey results; geochemical survey results; bulk samples – size and method of treatment; 	<ul style="list-style-type: none"> All available exploration data is reported.

Criteria	JORC Code explanation	Commentary
	<i>metallurgical test results; bulk density, groundwater, geotechnical and rock characteristics; potential deleterious or contaminating substances.</i>	
<i>Further work</i>	<ul style="list-style-type: none"> <i>The nature and scale of planned further work (eg tests for lateral extensions or depth extensions or large-scale step-out drilling).</i> <i>Diagrams clearly highlighting the areas of possible extensions, including the main geological interpretations and future drilling areas, provided this information is not commercially sensitive.</i> 	<ul style="list-style-type: none"> Planning of follow-up infill soil sampling and detailed geological mapping is underway to better define the anomalies before drill testing